

DATASHEET

Cytokeratin 8 Rabbit Monoclonal Antibody (ARM980)

CAT. NO. ARM6770

KEY FEATURES

Target	Cytokeratin 8	Clone ID	ARM980
Source / Host	Rabbit	Reactivity	Human
Applications	IHC	Dilution	1:100-1:200
Clonality	Monoclonal	Storage	-20°C

BACKGROUND

Cytokeratin 8 (CK8) is present in single-layer epithelial tissue. CK8 frequently interacts with Cytokeratin 18, and Anti-Cytokeratin 8 is useful for identifying adenocarcinomas with simple epithelium origin. It may also be used to differentiate between lobular (perinuclear staining) and ductal (peripheral staining) breast carcinomas.

APPLICATION

To ensure optimal assay performance, AREX recommends conducting reagent titration tailored to each testing system for optimal detection results.

Application	IHC
Dilution Ratio	1:100-1:200

*Results are sample-specific. Please refer to your local assay conditions and test parameters for reference.

PRODUCT OVERVIEW

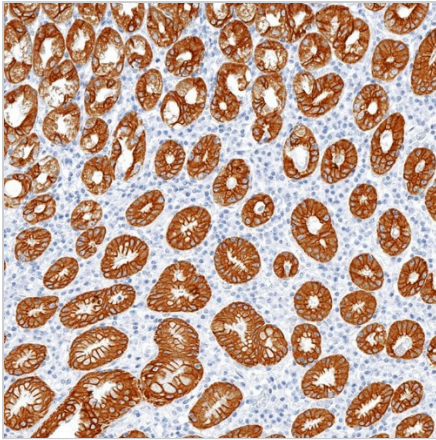
Antibody Type	Primary antibodies
Isotype	
Positive Control	Salivary Gland, Lung Adenocarcinoma
Localization	Cytoplasmic
Form / Buffer	Tris Buffer, pH 7.3 - 7.7, with 1% BSA and <0.1% Sodium Azide
Purification	Purified
Conjugation	Unconjugated
Gene Symbol	KRT8
Entrez Gene ID	3856
Uniprot	P05787
Alternative Names	CYK8; Keratin, type II cytoskeletal 8; Cytokeratin-8; CK-8; Keratin-8; K8; Type-II keratin Kb8

*AREX continuously optimizes our products. Webpage content may not reflect the latest updates. For inquiries, please contact info@arexbio.com or your local distributor.

*Clone Number, Reactivity, Source/Host and Clonality can be found in the product name and Key Features section above.

DATASHEET**Cytokeratin 8 Rabbit Monoclonal Antibody (ARM980)****CAT. NO. ARM6770****| STORAGE**

Store at 4°C short term. For long term storage, store at -20°C, avoiding freeze/thaw cycles.

| DATA

Immunohistochemical staining of human breast cancer tissue using Cytokeratin 8 Rabbit Monoclonal Antibody (ARM980).

| RESEARCH USE ONLY

For Research Use Only. Not for diagnostic, therapeutics, prophylactic or in vivo use.

More information: [www.arexbio.com / cytokeratin-8-mouse-monoclonal-antibody-arm980-arm6770](http://www.arexbio.com/cytokeratin-8-mouse-monoclonal-antibody-arm980-arm6770)