

DATASHEET

DOG1 Rabbit Monoclonal Antibody (ARM983)

CAT. NO. ARM6773

KEY FEATURES

Target	DOG1	Clone ID	ARM983
Source / Host	Rabbit	Reactivity	Human
Applications	IHC	Dilution	1:100-1:200
Clonality	Monoclonal	Storage	-20°C

BACKGROUND

DOG1, also known as Discovered on GIST-1, is a marker that is highly specific for gastrointestinal stromal tumour (GIST). Anti-DOG1 is extremely sensitive for the detection of GIST and its diagnosis. Although some GIST stain weakly for c-kit, DOG1 is expressed in the vast majority of GIST cases. Reports have also indicated DOG1 as a marker for salivary acinar and intercalated duct differentiation.

APPLICATION

To ensure optimal assay performance, AREX recommends conducting reagent titration tailored to each testing system for optimal detection results.

Application	IHC
Dilution Ratio	1:100-1:200

*Results are sample-specific. Please refer to your local assay conditions and test parameters for reference.

PRODUCT OVERVIEW

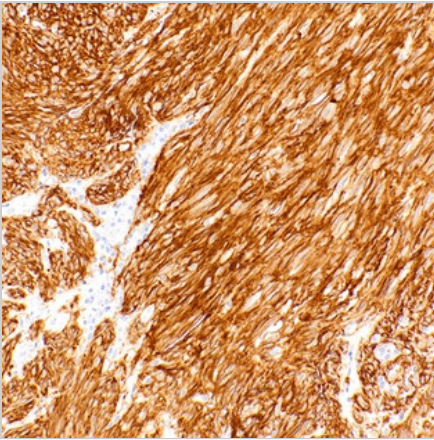
Antibody Type	Primary antibodies
Isotype	IgG
Positive Control	Gastrointestinal Stromal Tumor
Localization	Cytoplasmic, Membranous
Form / Buffer	Tris Buffer, pH 7.3 - 7.7, with 1% BSA and <0.1% Sodium Azide
Purification	Purified
Conjugation	Unconjugated
Gene Symbol	ANO1
Entrez Gene ID	55107
Uniprot	Q5XXA6
Alternative Names	Discovered on GIST 1, Anoctamin-1, TMEM16A

*AREX continuously optimizes our products. Webpage content may not reflect the latest updates. For inquiries, please contact info@arexbio.com or your local distributor.

*Clone Number, Reactivity, Source/Host and Clonality can be found in the product name and Key Features section above.

DATASHEET**DOG1 Rabbit Monoclonal Antibody (ARM983)****CAT. NO. ARM6773****| STORAGE**

Store at 4°C short term. For long term storage, store at -20°C, avoiding freeze/thaw cycles.

| DATA

Immunohistochemical staining of human GIST tissue using DOG1 Rabbit Monoclonal Antibody (ARM983) .

| RESEARCH USE ONLY

For Research Use Only. Not for diagnostic, therapeutics, prophylactic or in vivo use.

More information: www.arex.bio / dog1-mouse-monoclonal-antibody-arm983-arm6773