

**DATASHEET**

**EGFR Mouse Monoclonal Antibody (ARM985)**

**CAT. NO. ARM6775**

**KEY FEATURES**

Target	EGFR	Clone ID	ARM985
Source / Host	Mouse	Reactivity	Human
Applications	IHC	Dilution	1:100-1:200
Clonality	Monoclonal	Storage	-20°C

**BACKGROUND**

EGFR is type I receptor tyrosine kinase with sequence homology to erbB - 1, - 2, - 3, - 4. It binds to Epidermal Growth Factor (EGF), Transforming Growth Factor -  $\alpha$  (TGF -  $\alpha$ ), Heparin - binding EGF (HB - EGF), amphiregulin, betacellulin and epiregulin. EGFR is overexpressed in tumors of breast, brain, bladder, lung, gastric, head, neck, esophagus, cervix, vulva, ovary, and endometrium. It is predominantly present in squamous cell carcinomas.

**APPLICATION**

To ensure optimal assay performance, AREX recommends conducting reagent titration tailored to each testing system for optimal detection results.

Application	IHC
Dilution Ratio	1:100-1:200

\*Results are sample-specific. Please refer to your local assay conditions and test parameters for reference.

**PRODUCT OVERVIEW**

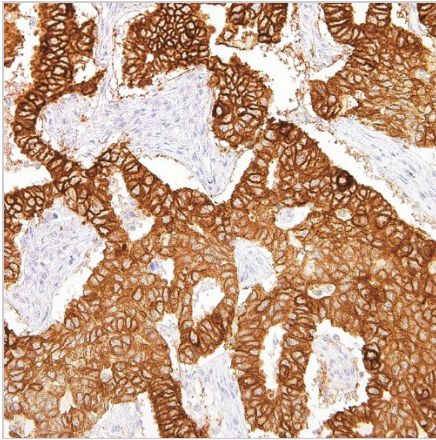
Antibody Type	Primary antibodies
Isotype	IgG1
Positive Control	Squamous Cell Carcinoma, Skin
Localization	Membranous, Cytoplasmic
Form / Buffer	Tris Buffer, pH 7.3 - 7.7, with 1% BSA and <0.1% Sodium Azide
Purification	Purified
Conjugation	Unconjugated
Gene Symbol	EGFR
Entrez Gene ID	1956
Uniprot	P00533
Alternative Names	ERBB; ERBB1; HER1; Epidermal growth factor receptor; Proto-oncogene c-ErbB-1; Receptor tyrosine-protein kinase erbB-1

\*AREX continuously optimizes our products. Webpage content may not reflect the latest updates. For inquiries, please contact [info@arexbio.com](mailto:info@arexbio.com) or your local distributor.

\*Clone Number, Reactivity, Source/Host and Clonality can be found in the product name and Key Features section above.

**DATASHEET****EGFR Mouse Monoclonal Antibody (ARM985)****CAT. NO. ARM6775****| STORAGE**

Store at 4°C short term. For long term storage, store at -20°C, avoiding freeze/thaw cycles.

**| DATA**

Immunohistochemical staining of human lung squamous cell carcinoma tissue using EGFR Mouse Monoclonal Antibody (ARM985).

**| RESEARCH USE ONLY**

For Research Use Only. Not for diagnostic, therapeutics, prophylactic or in vivo use.

More information: [www.arexbio.com / egfr-mouse-monoclonal-antibody-arm985-arm6775](http://www.arexbio.com/egfr-mouse-monoclonal-antibody-arm985-arm6775)