

DATASHEET

ERG Rabbit Monoclonal Antibody (ARM987)

CAT. NO. ARM6777

KEY FEATURES

Target	ERG	Clone ID	ARM987
Source / Host	Rabbit	Reactivity	Human
Applications	IHC	Dilution	1:100-1:200
Clonality	Monoclonal	Storage	-20°C

BACKGROUND

Erythroblastosis Virus E26 Transforming Sequence Related Gene (ERG) facilitates endothelial homeostasis. ERG is found in malignant and benign vascular endothelial tumours, including hemangiomas and Kaposi's sarcoma. ERG is present in various prostate carcinomas, but is absent in breast, colon, and urothelium carcinomas. Anti-ERG is useful for differentiating prostate carcinoma from non-prostatic epithelial tumours, and for recognizing vascular endothelial neoplasms.

APPLICATION

To ensure optimal assay performance, AREX recommends conducting reagent titration tailored to each testing system for optimal detection results.

Application	IHC
Dilution Ratio	1:100-1:200

*Results are sample-specific. Please refer to your local assay conditions and test parameters for reference.

PRODUCT OVERVIEW

Antibody Type	Primary antibodies
Isotype	IgG
Positive Control	Hemangioma, Tonsil
Localization	Nuclear
Form / Buffer	Tris Buffer, pH 7.3 - 7.7, with 1% BSA and <0.1% Sodium Azide
Purification	Purified
Conjugation	Unconjugated
Gene Symbol	ERG
Entrez Gene ID	2078
Uniprot	P11308
Alternative Names	Transcriptional regulator ERG; Transforming protein ERG

*AREX continuously optimizes our products. Webpage content may not reflect the latest updates. For inquiries, please contact info@arexbio.com or your local distributor.

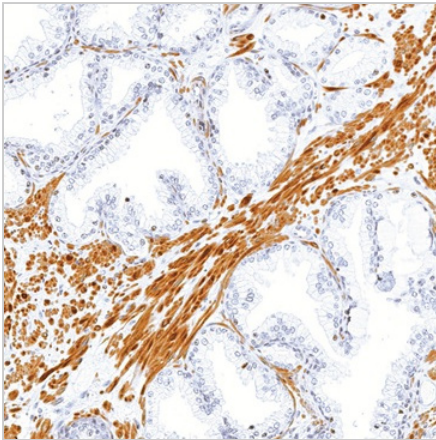
*Clone Number, Reactivity, Source/Host and Clonality can be found in the product name and Key Features section above.

DATASHEET**ERG Rabbit Monoclonal Antibody (ARM987)**

CAT. NO. ARM6777

STORAGE

Store at 4°C short term. For long term storage, store at -20°C, avoiding freeze/thaw cycles.

DATA

Immunohistochemical staining of human prostate tissue using ERG Rabbit Monoclonal Antibody (ARM987).

RESEARCH USE ONLY

For Research Use Only. Not for diagnostic, therapeutics, prophylactic or in vivo use.

More information: [www.arexbio.com / erg-mouse-monoclonal-antibody-arm987-arm6777](http://www.arexbio.com/erg-mouse-monoclonal-antibody-arm987-arm6777)