

DATASHEET

EZH2 Rabbit Monoclonal Antibody (ARM988)

CAT. NO. ARM6778

KEY FEATURES

Target	EZH2	Clone ID	ARM988
Source / Host	Rabbit	Reactivity	Human
Applications	IHC	Dilution	1:100-1:200
Clonality	Monoclonal	Storage	-20°C

BACKGROUND

Enhancer of Zeste Homolog 2 (EZH2) is a methylase of histone H3 that silences gene expression in those regions. EZH2 is overexpressed or mutated in gastric, prostate, uterine, breast, and renal cell cancers, as well as in melanoma and most B- and T-cell lymphomas. Although EZH2 is usually present in follicular centers, it is not expressed in the mantle zones, plasma cells, follicular or interfollicular T-lymphocytes, natural killer T-lymphocytes, plasmacytoma, lymphoplasmacytic lymphoma, or MALT lymphoma. EZH2 is rarely present in normal breast duct epithelium and in normal and hyperplastic lymph node. Anti-EZH2 is also useful for detecting lymphoma and non-small cell lung cancers. EZH2 is associated with tumour proliferation and can be used in staining panels to distinguish aggressive lymphomas from less aggressive lymphomas or normal cells.

APPLICATION

To ensure optimal assay performance, AREX recommends conducting reagent titration tailored to each testing system for optimal detection results.

Application	IHC
Dilution Ratio	1:100-1:200

*Results are sample-specific. Please refer to your local assay conditions and test parameters for reference.

PRODUCT OVERVIEW

Antibody Type	Primary antibodies
Isotype	IgG
Positive Control	Prostate Adenocarcinoma, Tonsil, Breast Carcinoma
Localization	Nuclear
Form / Buffer	Tris Buffer, pH 7.3 - 7.7, with 1% BSA and <0.1% Sodium Azide
Purification	Purified
Conjugation	Unconjugated
Gene Symbol	EZH2
Entrez Gene ID	2146
Uniprot	Q15910
Alternative Names	KMT6; Histone-lysine N-methyltransferase EZH2; ENX-1; Enhancer of zeste homolog 2; Lysine N-methyltransferase 6

*AREX continuously optimizes our products. Webpage content may not reflect the latest updates. For inquiries, please contact info@arexbio.com or your local distributor.

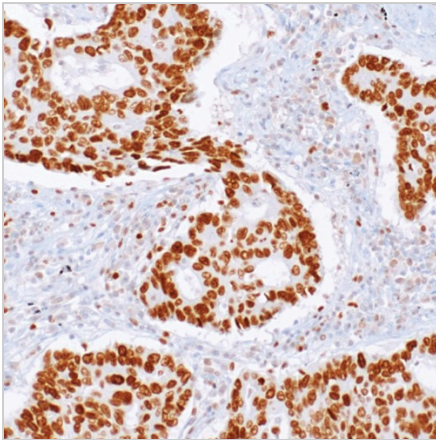
*Clone Number, Reactivity, Source/Host and Clonality can be found in the product name and Key Features section above.

DATASHEET**EZH2 Rabbit Monoclonal Antibody (ARM988)**

CAT. NO. ARM6778

STORAGE

Store at 4°C short term. For long term storage, store at -20°C, avoiding freeze/thaw cycles.

DATA

Immunohistochemical staining of human tonsil tissue sections using EZH2 Rabbit Monoclonal Antibody (ARM988).

RESEARCH USE ONLY

For Research Use Only. Not for diagnostic, therapeutics, prophylactic or in vivo use.

More information: www.arexbio.com / ezh2-mouse-monoclonal-antibody-arm988-arm6778