

DATASHEET

Fibronectin Mouse Monoclonal Antibody (ARM991)

CAT. NO. ARM6781

KEY FEATURES

Target	Fibronectin	Clone ID	ARM991
Source / Host	Mouse	Reactivity	Human
Applications	IHC	Dilution	1:100-1:200
Clonality	Monoclonal	Storage	-20°C

BACKGROUND

Fibronectin is a glycoprotein that contributes to cell adhesion, migration, and metastasis. Renal cancer cells exhibit higher expression of fibronectin, therefore Anti-Fibronectin is useful for assessing the progression and aggressiveness of renal cancer cells.

APPLICATION

To ensure optimal assay performance, AREX recommends conducting reagent titration tailored to each testing system for optimal detection results.

Application	IHC
Dilution Ratio	1:100-1:200

*Results are sample-specific. Please refer to your local assay conditions and test parameters for reference.

PRODUCT OVERVIEW

Antibody Type	Primary antibodies
Isotype	IgG1
Positive Control	Kidney tissues
Localization	Extracellular secreted
Form / Buffer	Tris Buffer, pH 7.3 - 7.7, with 1% BSA and <0.1% Sodium Azide
Purification	Purified
Conjugation	Unconjugated
Gene Symbol	FN1
Entrez Gene ID	2335
Uniprot	P02751
Alternative Names	FN; Fibronectin; FN; Cold-insoluble globulin; CIG

*AREX continuously optimizes our products. Webpage content may not reflect the latest updates. For inquiries, please contact info@arexbio.com or your local distributor.

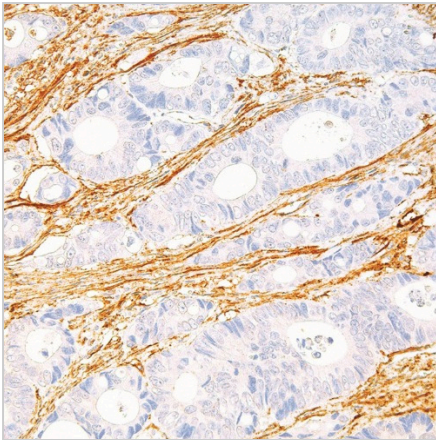
*Clone Number, Reactivity, Source/Host and Clonality can be found in the product name and Key Features section above.

DATASHEET**Fibronectin Mouse Monoclonal Antibody (ARM991)**

CAT. NO. ARM6781

STORAGE

Store at 4°C short term. For long term storage, store at -20°C, avoiding freeze/thaw cycles.

DATA

Immunohistochemical staining of human kidney tissue using Fibronectin Mouse Monoclonal Antibody (ARM991).

RESEARCH USE ONLY

For Research Use Only. Not for diagnostic, therapeutics, prophylactic or in vivo use.

More information: [www.arexbio.com / fibronectin-mouse-monoclonal-antibody-arm991-arm6781](http://www.arexbio.com/fibronectin-mouse-monoclonal-antibody-arm991-arm6781)