

## DATASHEET

# GCDFP-15 Rabbit Monoclonal Antibody (ARM996)

CAT. NO. ARM6786

### KEY FEATURES

Target	GCDFP-15	Clone ID	ARM996
Source / Host	Rabbit	Reactivity	Human
Applications	IHC	Dilution	1:100-1:200
Clonality	Monoclonal	Storage	-20°C

### BACKGROUND

The GCDFP-15 antibody is intended for qualified laboratories to qualitatively identify by light microscopy, the presence of associated antigens in formalin-fixed, paraffin-embedded (FFPE) tissue sections using immunohistochemistry test methods. Use of this antibody is indicated, subsequent to clinical differential diagnoses of diseases, as an aid in the identification of neoplastic tissues within the context of antibody panels, the patient's clinical history and other diagnostic tests as evaluated by a qualified pathologist

### APPLICATION

To ensure optimal assay performance, AREX recommends conducting reagent titration tailored to each testing system for optimal detection results.

Application	IHC
Dilution Ratio	1:100-1:200

\*Results are sample-specific. Please refer to your local assay conditions and test parameters for reference.

### PRODUCT OVERVIEW

Antibody Type	Primary antibodies
Isotype	IgG
Positive Control	Breast Carcinoma
Localization	Cytoplasmic
Form / Buffer	Tris Buffer, pH 7.3 - 7.7, with 1% BSA and <0.1% Sodium Azide
Purification	Purified
Conjugation	Unconjugated
Gene Symbol	PIP
Entrez Gene ID	5304
Uniprot	P12273
Alternative Names	Gross cystic disease fluid protein 15

\*AREX continuously optimizes our products. Webpage content may not reflect the latest updates. For inquiries, please contact [info@arexbio.com](mailto:info@arexbio.com) or your local distributor.

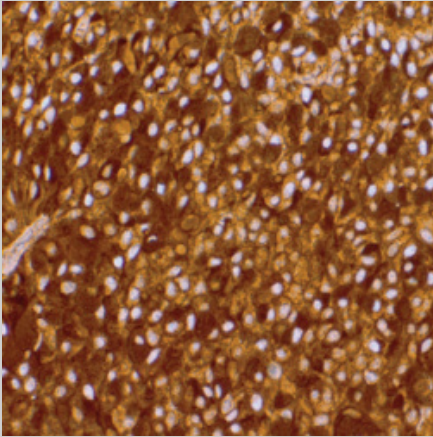
\*Clone Number, Reactivity, Source/Host and Clonality can be found in the product name and Key Features section above.

**DATASHEET****GCDFP-15 Rabbit Monoclonal Antibody (ARM996)**

CAT. NO. ARM6786

**STORAGE**

Store at 4°C short term. For long term storage, store at -20°C, avoiding freeze/thaw cycles.

**DATA**

Immunohistochemical staining of human breast tissue using GCDFP-15 Rabbit Monoclonal Antibody (ARM996).

**RESEARCH USE ONLY**

For Research Use Only. Not for diagnostic, therapeutics, prophylactic or in vivo use.

More information: [www.arexbio.com / gcdfp-15-mouse-monoclonal-antibody-arm996-arm6786](http://www.arexbio.com/gcdfp-15-mouse-monoclonal-antibody-arm996-arm6786)