

DATASHEET

GLUT1 Mouse Monoclonal Antibody (ARM998)

CAT. NO. ARM6788

KEY FEATURES

Target	GLUT1	Clone ID	ARM998
Source / Host	Mouse	Reactivity	Human
Applications	IHC	Dilution	1:100-1:200
Clonality	Monoclonal	Storage	-20°C

BACKGROUND

Glucose transporter type I (GLUT1), also known as SLC2A1, is a glucose transporter present in the blood-brain barrier and erythrocytes. GLUT1 overexpression is associated with tumour progression or poor prognoses of bladder, breast, cervical, colon, and lung carcinomas, as well as mesothelioma. Anti-GLUT1 is useful for distinguishing malignant mesothelioma (GLUT1(+)) from reactive mesothelium (GLUT1(-)).

APPLICATION

To ensure optimal assay performance, AREX recommends conducting reagent titration tailored to each testing system for optimal detection results.

Application	IHC
Dilution Ratio	1:100-1:200

*Results are sample-specific. Please refer to your local assay conditions and test parameters for reference.

PRODUCT OVERVIEW

Antibody Type	Primary antibodies
Isotype	IgG1
Positive Control	Colorectal Carcinoma, Malignant
Localization	Cytoplasmic, Membranous
Form / Buffer	Tris Buffer, pH 7.3 - 7.7, with 1% BSA and <0.1% Sodium Azide
Purification	Purified
Conjugation	Unconjugated
Gene Symbol	SLC2A1
Entrez Gene ID	6513
Uniprot	P11166
Alternative Names	GLUT1; Solute carrier family 2, facilitated glucose transporter member 1; Glucose transporter type 1, erythrocyte/brain; GLUT-1; HepG2 glucose transporter

*AREX continuously optimizes our products. Webpage content may not reflect the latest updates. For inquiries, please contact info@arexbio.com or your local distributor.

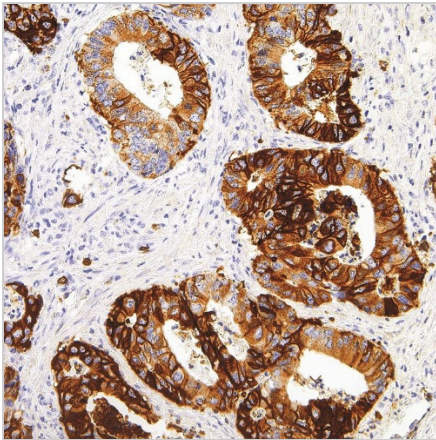
*Clone Number, Reactivity, Source/Host and Clonality can be found in the product name and Key Features section above.

DATASHEET**GLUT1 Mouse Monoclonal Antibody (ARM998)**

CAT. NO. ARM6788

STORAGE

Store at 4°C short term. For long term storage, store at -20°C, avoiding freeze/thaw cycles.

DATA

Immunohistochemical staining of human colon cancer tissue using GLUT1 Mouse Monoclonal Antibody (ARM998).

RESEARCH USE ONLY

For Research Use Only. Not for diagnostic, therapeutics, prophylactic or in vivo use.

More information: [www.arexbio.com / glut1-mouse-monoclonal-antibody-arm998-arm6788](http://www.arexbio.com/glut1-mouse-monoclonal-antibody-arm998-arm6788)