

DATASHEET

Glypican-3 Mouse Monoclonal Antibody (ARM500)

CAT. NO. ARM6790

KEY FEATURES

Target	Glypican-3	Clone ID	ARM500
Source / Host	Mouse	Reactivity	Human
Applications	IHC	Dilution	1:100-1:200
Clonality	Monoclonal	Storage	-20°C

BACKGROUND

Glypican-3 (GPC3) is a GPI-anchored proteoglycan involved in cell division and growth regulation. Glypican-3 is a useful tumour marker, and its expression has been shown to be upregulated in hepatocellular carcinoma (HCC), hepatoblastoma, melanoma, testicular germ cell tumours, and Wilms' tumour. Patients with HCC have presented elevated levels of GPC3 in the neoplastic liver tissues and serum, levels which are higher than detected in cirrhotic liver or liver with focal lesions, including those with hepatic adenoma and dysplastic nodules. Glypican-3 is also overexpressed in testicular germ cell tumours of certain subtypes, such as yolk sac tumours and choriocarcinoma, and in embryonal tumours.

APPLICATION

To ensure optimal assay performance, AREX recommends conducting reagent titration tailored to each testing system for optimal detection results.

Application	IHC
Dilution Ratio	1:100-1:200

*Results are sample-specific. Please refer to your local assay conditions and test parameters for reference.

PRODUCT OVERVIEW

Antibody Type	Primary antibodies
Isotype	IgG1
Positive Control	Hepatocellular Carcinoma
Localization	Cytoplasmic
Form / Buffer	Tris Buffer, pH 7.3 - 7.7, with 1% BSA and <0.1% Sodium Azide
Purification	Purified
Conjugation	Unconjugated
Gene Symbol	GPC3
Entrez Gene ID	2717
Uniprot	P51654
Alternative Names	GPC3, OCI-5

*AREX continuously optimizes our products. Webpage content may not reflect the latest updates. For inquiries, please contact info@arexbio.com or your local distributor.

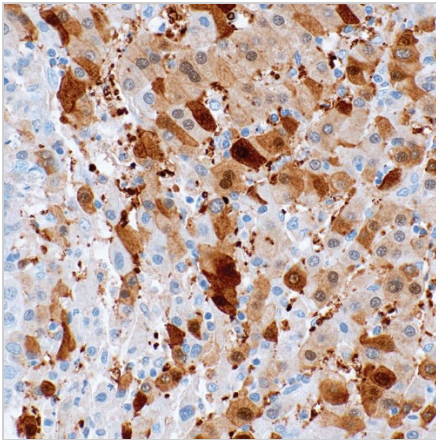
*Clone Number, Reactivity, Source/Host and Clonality can be found in the product name and Key Features section above.

DATASHEET**Glypican-3 Mouse Monoclonal Antibody (ARM500)**

CAT. NO. ARM6790

STORAGE

Store at 4°C short term. For long term storage, store at -20°C, avoiding freeze/thaw cycles.

DATA

Immunohistochemical staining of human liver tissue using Glypican-3 Mouse Monoclonal Antibody (ARM500).

RESEARCH USE ONLY

For Research Use Only. Not for diagnostic, therapeutics, prophylactic or in vivo use.

More information: www.arexbio.com/glypican-3-mouse-monoclonal-antibody-arm500-arm6790