

DATASHEET

Growth Hormone (GH) Mouse Monoclonal Antibody (ARM502)

CAT. NO. ARM6792

KEY FEATURES

Target	Growth Hormone (GH)	Clone ID	ARM502
Source / Host	Mouse	Reactivity	Human
Applications	IHC	Dilution	1:100-1:200
Clonality	Monoclonal	Storage	-20°C

BACKGROUND

Growth Hormone (GH or hGH) is a peptidic hormone produced by somatotrophs of the anterior pituitary gland. Anti-Growth Hormone stains somatotrophs in normal pituitary tissues, and is useful in identifying pituitary tumours and understanding pituitary disease or acromegaly. Studies have also found Anti-GH to stain non-pituitary cells, such as hepatocellular carcinoma and cutaneous lesions.

APPLICATION

To ensure optimal assay performance, AREX recommends conducting reagent titration tailored to each testing system for optimal detection results.

Application	IHC
Dilution Ratio	1:100-1:200

*Results are sample-specific. Please refer to your local assay conditions and test parameters for reference.

PRODUCT OVERVIEW

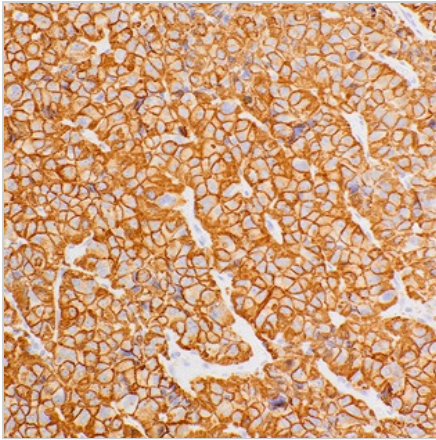
Antibody Type	Primary antibodies
Isotype	IgG1, kappa
Positive Control	Pituitary tissues
Localization	Cytoplasmic
Form / Buffer	Tris Buffer, pH 7.3 - 7.7, with 1% BSA and <0.1% Sodium Azide
Purification	Purified
Conjugation	Unconjugated
Gene Symbol	GH1
Entrez Gene ID	2688
Uniprot	P01241
Alternative Names	Somatotropin, GH1

*AREX continuously optimizes our products. Webpage content may not reflect the latest updates. For inquiries, please contact info@arexbio.com or your local distributor.

*Clone Number, Reactivity, Source/Host and Clonality can be found in the product name and Key Features section above.

DATASHEET**Growth Hormone (GH) Mouse Monoclonal Antibody (ARM502)****CAT. NO. ARM6792****| STORAGE**

Store at 4°C short term. For long term storage, store at -20°C, avoiding freeze/thaw cycles.

| DATA

Immunohistochemical staining of human pituitary tissue using Growth Hormone (GH) Mouse Monoclonal Antibody (ARM502).

| RESEARCH USE ONLY

For Research Use Only. Not for diagnostic, therapeutics, prophylactic or in vivo use.

More information: [www.arexbio.com / growth-hormone-\(gh\)-mouse-monoclonal-antibody-arm502-arm6792](http://www.arexbio.com/growth-hormone-(gh)-mouse-monoclonal-antibody-arm502-arm6792)