

## DATASHEET

# hCG Mouse Monoclonal Antibody (ARM505)

CAT. NO. ARM6795

### KEY FEATURES

Target	hCG	Clone ID	ARM505
Source / Host	Mouse	Reactivity	Human
Applications	IHC	Dilution	1:100-1:200
Clonality	Monoclonal	Storage	-20°C

### BACKGROUND

Human Chorionic Gonadotropin (hCG) is a glycoprotein hormone produced by the trophoblastic cells of the placenta after conception. Anti-hCG is useful for identifying trophoblastic tumours, such as choriocarcinoma. hCG is also a marker for non-trophoblastic tumours such as large cell carcinoma and lung adenocarcinoma.

### APPLICATION

To ensure optimal assay performance, AREX recommends conducting reagent titration tailored to each testing system for optimal detection results.

Application	IHC
Dilution Ratio	1:100-1:200

\*Results are sample-specific. Please refer to your local assay conditions and test parameters for reference.

### PRODUCT OVERVIEW

Antibody Type	Primary antibodies
Isotype	IgG1
Positive Control	Placenta tissues
Localization	Cytoplasmic
Form / Buffer	Tris Buffer, pH 7.3 - 7.7, with 1% BSA and <0.1% Sodium Azide
Purification	Purified
Conjugation	Unconjugated
Gene Symbol	CGB3
Entrez Gene ID	1082
Uniprot	P01233
Alternative Names	Human chorionic gonadotropin beta subunit

\*AREX continuously optimizes our products. Webpage content may not reflect the latest updates. For inquiries, please contact [info@arexbio.com](mailto:info@arexbio.com) or your local distributor.

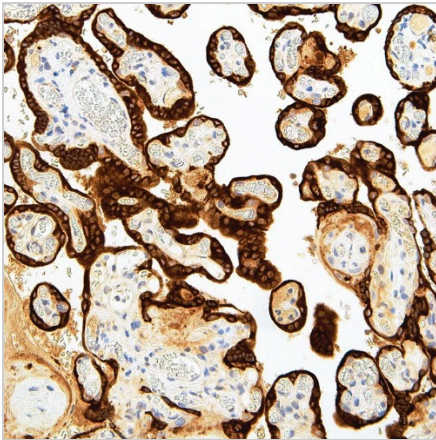
\*Clone Number, Reactivity, Source/Host and Clonality can be found in the product name and Key Features section above.

**DATASHEET****hCG Mouse Monoclonal Antibody (ARM505)**

CAT. NO. ARM6795

**STORAGE**

Store at 4°C short term. For long term storage, store at -20°C, avoiding freeze/thaw cycles.

**DATA**

Immunohistochemical staining of human placenta tissue using hCG Mouse Monoclonal Antibody (ARM505).

**RESEARCH USE ONLY**

For Research Use Only. Not for diagnostic, therapeutics, prophylactic or in vivo use.

More information: [www.arexbio.com/hcg-mouse-monoclonal-antibody-arm505-arm6795](http://www.arexbio.com/hcg-mouse-monoclonal-antibody-arm505-arm6795)