

DATASHEET

HIF-1 Alpha Rabbit Monoclonal Antibody (ARM508)

CAT. NO. ARM6798

KEY FEATURES

Target	HIF-1 Alpha	Clone ID	ARM508
Source / Host	Rabbit	Reactivity	Human
Applications	IHC	Dilution	1:100-1:200
Clonality	Monoclonal	Storage	-20°C

BACKGROUND

Hypoxia-Inducible Factor 1-Alpha (HIF-1-alpha or HIF1A) is an important mediator of the cellular and systemic responses to hypoxia, promoting survival and maintaining homeostasis in conditions of low oxygen. HIF1A regulates the expression of proteins such as erythropoietin, nitric oxide synthase, and mesenchymal-epidermal transition (MET) receptor, which promote angiogenesis, anaerobic metabolism, and many other survival pathways necessary in hypoxic environments. It has been suggested that tumour hypoxia and the resultant overexpression of MET by HIF1A promotes metastasis, and MET overexpression is correlated with poor prognosis and metastatic disease in the case of breast cancer. HIF-1 α expression is associated with cancer progression and clinical outcome in many types of tumours, including breast cancer, type 1 endometrial carcinoma, sarcoma, head and neck tumours, and brain tumours.

APPLICATION

To ensure optimal assay performance, AREX recommends conducting reagent titration tailored to each testing system for optimal detection results.

Application	IHC
Dilution Ratio	1:100-1:200

*Results are sample-specific. Please refer to your local assay conditions and test parameters for reference.

PRODUCT OVERVIEW

Antibody Type	Primary antibodies
Isotype	IgG
Positive Control	Esophagus cancer
Localization	Nuclear, Cytoplasmic
Form / Buffer	Tris Buffer, pH 7.3 - 7.7, with 1% BSA and <0.1% Sodium Azide
Purification	Purified
Conjugation	Unconjugated
Gene Symbol	HIF1A
Entrez Gene ID	3091
Uniprot	Q16665
Alternative Names	Hypoxia-inducible factor 1-alpha

*AREX continuously optimizes our products. Webpage content may not reflect the latest updates. For inquiries, please contact info@arexbio.com or your local distributor.

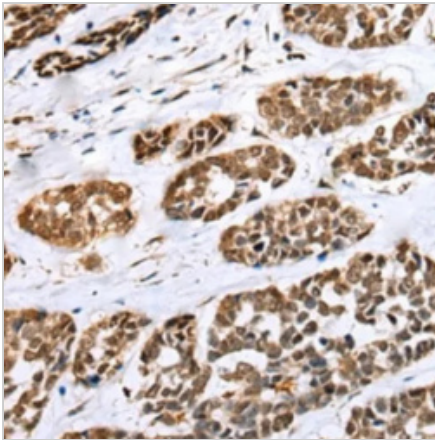
*Clone Number, Reactivity, Source/Host and Clonality can be found in the product name and Key Features section above.

DATASHEET**HIF-1 Alpha Rabbit Monoclonal Antibody (ARM508)**

CAT. NO. ARM6798

STORAGE

Store at 4°C short term. For long term storage, store at -20°C, avoiding freeze/thaw cycles.

DATA

Immunohistochemical staining of human esophagus cancer tissue using HIF-1 Alpha Rabbit Monoclonal Antibody (ARM508) .

RESEARCH USE ONLY

For Research Use Only. Not for diagnostic, therapeutics, prophylactic or in vivo use.

More information: www.arexbio.com/hif-1-alpha-mouse-monoclonal-antibody-arm508-arm6798