

DATASHEET

IMP3 Rabbit Monoclonal Antibody (ARM510)

CAT. NO. ARM6800

KEY FEATURES

| | | | |
|---------------|------------|------------|-------------|
| Target | IMP3 | Clone ID | ARM510 |
| Source / Host | Rabbit | Reactivity | Human |
| Applications | IHC | Dilution | 1:100-1:200 |
| Clonality | Monoclonal | Storage | -20°C |

BACKGROUND

Insulin-like growth factor 2 mRNA-binding protein 3 (IMP3), is a regulator of targets such as insulin-like growth factor-2 and β -actin. The protein is localized mainly in the nucleolus, and plays a critical role in early embryogenesis as it helps mediate the development of the intestine, thymus, pancreas, and kidneys. IMP3 has been reported as a potential aid in the classification of non-small cell lung carcinomas and pancreatic adenocarcinomas, and studies have shown IMP3 to be correlated with increased tumour aggressiveness and reduced overall survival. IMP3 has also been clinically linked to a number of other cancers including adenocarcinomas of the uterine cervix and esophagus, as well as triple negative breast cancer, endometrial and urothelial carcinomas, renal cell and Merkel cell carcinomas, malignant melanoma, and neuroendocrine carcinoma of the lung.

APPLICATION

To ensure optimal assay performance, AREX recommends conducting reagent titration tailored to each testing system for optimal detection results.

| | |
|----------------|-------------|
| Application | IHC |
| Dilution Ratio | 1:100-1:200 |

*Results are sample-specific. Please refer to your local assay conditions and test parameters for reference.

PRODUCT OVERVIEW

| | |
|-------------------|---|
| Antibody Type | Primary antibodies |
| Isotype | IgG |
| Positive Control | Pancreatic ductal adenocarcinoma, placenta |
| Localization | |
| Form / Buffer | Tris Buffer, pH 7.3 - 7.7, with 1% BSA and <0.1% Sodium Azide |
| Purification | Purified |
| Conjugation | Unconjugated |
| Gene Symbol | IMP3 |
| Entrez Gene ID | 55272 |
| Uniprot | Q9NV31 |
| Alternative Names | C15orf12; MRPS4; U3 small nucleolar ribonucleoprotein protein IMP3; U3 snoRNP protein IMP3; BRMS2 |

*AREX continuously optimizes our products. Webpage content may not reflect the latest updates. For inquiries, please contact info@arexbio.com or your local distributor.

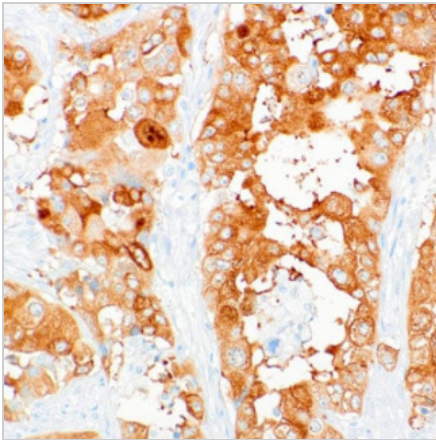
*Clone Number, Reactivity, Source/Host and Clonality can be found in the product name and Key Features section above.

DATASHEET**IMP3 Rabbit Monoclonal Antibody (ARM510)**

CAT. NO. ARM6800

STORAGE

Store at 4°C short term. For long term storage, store at -20°C, avoiding freeze/thaw cycles.

DATA

Immunohistochemical staining of human pancreatic cancer tissue using IMP3 Rabbit Monoclonal Antibody (ARM510).

RESEARCH USE ONLY

For Research Use Only. Not for diagnostic, therapeutics, prophylactic or in vivo use.

More information: [www.arexbio.com / imp3-mouse-monoclonal-antibody-arm510-arm6800](http://www.arexbio.com/imp3-mouse-monoclonal-antibody-arm510-arm6800)