

DATASHEET

Inhibin Alpha Mouse Monoclonal Antibody (ARM511)

CAT. NO. ARM6801

KEY FEATURES

Target	Inhibin Alpha	Clone ID	ARM511
Source / Host	Mouse	Reactivity	Human
Applications	IHC	Dilution	1:100-1:200
Clonality	Monoclonal	Storage	-20°C

BACKGROUND

Inhibin Alpha, also known as INHA, is a peptide hormone belonging to the transforming growth factor-beta (TGF- β) family. It is produced by ovarian granulosa cells in female follicles and by Sertoli cells in the male seminiferous tubules, with the purpose of inhibiting the release of follicle-stimulating hormone, and is also found in the prostate, brain, and adrenal glands. This marker has proven effective in aiding with a number of differential diagnoses, including distinguishing between adrenal cortical tumours and renal cell carcinoma, and between intrauterine and ectopic pregnancy in endometrial curettage. Anti-Inhibin α can also be used to detect for sex cord stromal tumours of the ovary as well as trophoblastic tumours.

APPLICATION

To ensure optimal assay performance, AREX recommends conducting reagent titration tailored to each testing system for optimal detection results.

Application	IHC
Dilution Ratio	1:100-1:200

*Results are sample-specific. Please refer to your local assay conditions and test parameters for reference.

PRODUCT OVERVIEW

Antibody Type	Primary antibodies
Isotype	IgG2a
Positive Control	Adrenal Cortex, Testis tissue
Localization	Cytoplasmic
Form / Buffer	Tris Buffer, pH 7.3 - 7.7, with 1% BSA and <0.1% Sodium Azide
Purification	Purified
Conjugation	Unconjugated
Gene Symbol	INHA
Entrez Gene ID	3623
Uniprot	P05111
Alternative Names	Inhibin alpha subunit

*AREX continuously optimizes our products. Webpage content may not reflect the latest updates. For inquiries, please contact info@arexbio.com or your local distributor.

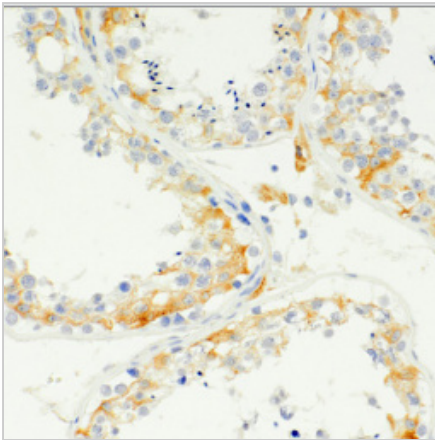
*Clone Number, Reactivity, Source/Host and Clonality can be found in the product name and Key Features section above.

DATASHEET**Inhibin Alpha Mouse Monoclonal Antibody (ARM511)**

CAT. NO. ARM6801

STORAGE

Store at 4°C short term. For long term storage, store at -20°C, avoiding freeze/thaw cycles.

DATA

Immunohistochemical staining of human testis tissue using Inhibin Alpha Mouse Monoclonal Antibody (ARM511).

RESEARCH USE ONLY

For Research Use Only. Not for diagnostic, therapeutics, prophylactic or in vivo use.

More information: www.arexbio.com/inhibin-alpha-mouse-monoclonal-antibody-arm511-arm6801