

DATASHEET

INI-1 Mouse Monoclonal Antibody (ARM512)

CAT. NO. ARM6802

KEY FEATURES

Target	INI-1	Clone ID	ARM512
Source / Host	Mouse	Reactivity	Human
Applications	IHC	Dilution	1:100-1:200
Clonality	Monoclonal	Storage	-20°C

BACKGROUND

Integrase interactor 1 (INI-1), also known as hSNF5, is an integral component of the hSWI/SNF (SWItch/Sucrose Non Fermentable) chromatin remodeling complex, which facilitates DNA-dependent cellular processes including transcription, replication, and repair. The INI-1 gene is often mutated or deleted in malignant rhabdoid tumour (MRT), a tumour which is potentially mimicked by medulloblastoma and supratentorial primitive neuroectodermal tumours (sPNETs). The morphology of MRTs can often present challenges in differential diagnosis, and INI-1 has shown to be useful in distinguishing between the three conditions as the majority of medulloblastomas and sPNETs are labeled by Anti-INI-1, while a lack of nuclear labeling by the same antibody is characteristic of MRT.

APPLICATION

To ensure optimal assay performance, AREX recommends conducting reagent titration tailored to each testing system for optimal detection results.

Application	IHC
Dilution Ratio	1:100-1:200

*Results are sample-specific. Please refer to your local assay conditions and test parameters for reference.

PRODUCT OVERVIEW

Antibody Type	Primary antibodies
Isotype	IgG2a
Positive Control	Brain, Astrocytoma, Breast Cancer
Localization	Nuclear
Form / Buffer	Tris Buffer, pH 7.3 - 7.7, with 1% BSA and <0.1% Sodium Azide
Purification	Purified
Conjugation	Unconjugated
Gene Symbol	SMARCB1
Entrez Gene ID	6598
Uniprot	Q12824
Alternative Names	SMARCB1, SNF5, BAF47

*AREX continuously optimizes our products. Webpage content may not reflect the latest updates. For inquiries, please contact info@arexbio.com or your local distributor.

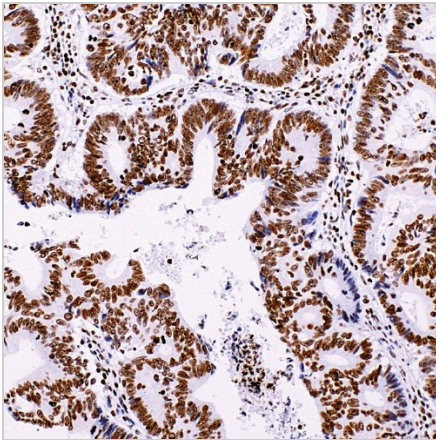
*Clone Number, Reactivity, Source/Host and Clonality can be found in the product name and Key Features section above.

DATASHEET**INI-1 Mouse Monoclonal Antibody (ARM512)**

CAT. NO. ARM6802

STORAGE

Store at 4°C short term. For long term storage, store at -20°C, avoiding freeze/thaw cycles.

DATA

Immunohistochemical staining of human breast cancer tissue sections using INI-1 Mouse Monoclonal Antibody (ARM512).

RESEARCH USE ONLY

For Research Use Only. Not for diagnostic, therapeutics, prophylactic or in vivo use.

More information: www.arexbio.com/ini-1-mouse-monoclonal-antibody-arm512-arm6802