

DATASHEET

Insulin Mouse Monoclonal Antibody (ARM513)

CAT. NO. ARM6803

KEY FEATURES

Target	Insulin	Clone ID	ARM513
Source / Host	Mouse	Reactivity	Human
Applications	IHC	Dilution	1:100-1:200
Clonality	Monoclonal	Storage	-20°C

BACKGROUND

Insulin is a polypeptide hormone produced by the pancreas in the beta cells of the Islets of Langerhans. Its biological functions include regulating the storage and release of glucose, as well as promoting glycogen storage, triglyceride formation, and protein synthesis. Insulin has been clinically indicated in a number of conditions, including tumours of beta cell origin. The presence of insulin in the cytoplasm of islet cell tumours is indicative of functional insulinomas, while a deficiency of insulin results in diabetes mellitus.

APPLICATION

To ensure optimal assay performance, AREX recommends conducting reagent titration tailored to each testing system for optimal detection results.

Application	IHC
Dilution Ratio	1:100-1:200

*Results are sample-specific. Please refer to your local assay conditions and test parameters for reference.

PRODUCT OVERVIEW

Antibody Type	Primary antibodies
Isotype	IgG1, kappa
Positive Control	Pancreatic tissues
Localization	Cytoplasmic
Form / Buffer	Tris Buffer, pH 7.3 - 7.7, with 1% BSA and <0.1% Sodium Azide
Purification	Purified
Conjugation	Unconjugated
Gene Symbol	INS
Entrez Gene ID	3630
Uniprot	P01308
Alternative Names	Insulin

*AREX continuously optimizes our products. Webpage content may not reflect the latest updates. For inquiries, please contact info@arexbio.com or your local distributor.

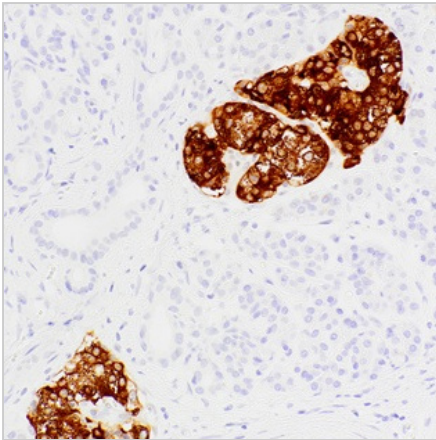
*Clone Number, Reactivity, Source/Host and Clonality can be found in the product name and Key Features section above.

DATASHEET**Insulin Mouse Monoclonal Antibody (ARM513)**

CAT. NO. ARM6803

STORAGE

Store at 4°C short term. For long term storage, store at -20°C, avoiding freeze/thaw cycles.

DATA

Immunohistochemical staining of human pancreas tissue using Insulin Mouse Monoclonal Antibody (ARM513).

RESEARCH USE ONLY

For Research Use Only. Not for diagnostic, therapeutics, prophylactic or in vivo use.

More information: www.arexbio.com/insulin-mouse-monoclonal-antibody-arm513-arm6803