

## DATASHEET

# KBA.62 (Melanoma Associated Antigen) Mouse Monoclonal Antibody (ARM515)

CAT. NO. ARM6805

### KEY FEATURES

Target	KBA.62 (Melanoma Associated Antigen)	Clone ID	ARM515
Source / Host	Mouse	Reactivity	Human
Applications	IHC	Dilution	1:100-1:200
Clonality	Monoclonal	Storage	-20°C

### BACKGROUND

KBA.62, also known as Melanoma Associated Antigen, is used to detect an antigen present in melanocytic tumours, such as melanomas, due to its proven sensitivity and specificity. The antibody can also be used to distinguish between junctional nevus and intradermal nevus cells, and fetal melanocytes versus normal adult melanocytes. Studies have shown KBA.62 to be highly useful in differentiating between metastatic amelanotic melanoma and a number of poorly differentiated carcinomas, large cell lymphomas, sarcomas, and spindle cell carcinomas.

### APPLICATION

To ensure optimal assay performance, AREX recommends conducting reagent titration tailored to each testing system for optimal detection results.

Application	IHC
Dilution Ratio	1:100-1:200

\*Results are sample-specific. Please refer to your local assay conditions and test parameters for reference.

### PRODUCT OVERVIEW

Antibody Type	Primary antibodies
Isotype	IgG1
Positive Control	Melanoma
Localization	Membranous
Form / Buffer	Tris Buffer, pH 7.3 - 7.7, with 1% BSA and <0.1% Sodium Azide
Purification	Purified
Conjugation	Unconjugated
Gene Symbol	Undefined Gene
Entrez Gene ID	N/A
Uniprot	N/A
Alternative Names	Melanoma-associated antigen

\*AREX continuously optimizes our products. Webpage content may not reflect the latest updates. For inquiries, please contact [info@arexbio.com](mailto:info@arexbio.com) or your local distributor.

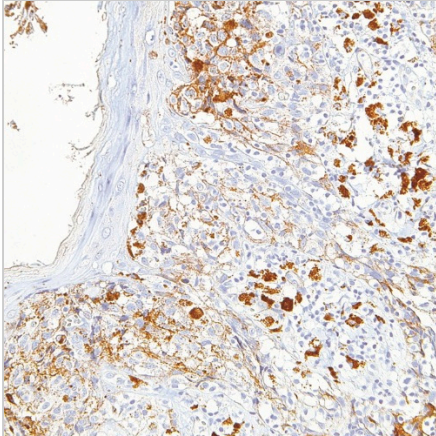
\*Clone Number, Reactivity, Source/Host and Clonality can be found in the product name and Key Features section above.

**DATASHEET****KBA.62 (Melanoma Associated Antigen) Mouse Monoclonal Antibody (ARM515)**

CAT. NO. ARM6805

**STORAGE**

Store at 4°C short term. For long term storage, store at -20°C, avoiding freeze/thaw cycles.

**DATA**

Immunohistochemical staining of human melanoma tissue using KBA.62 (Melanoma Associated Antigen) Mouse Monoclonal Antibody (ARM515).

**RESEARCH USE ONLY**

For Research Use Only. Not for diagnostic, therapeutics, prophylactic or in vivo use.

More information: [www.arexbio.com / kba.62-\(melanoma-associated-antigen\)-mouse-monoclonal-antibody-arm515-arm6805](http://www.arexbio.com/kba.62-(melanoma-associated-antigen)-mouse-monoclonal-antibody-arm515-arm6805)