

DATASHEET

Ksp-cadherin Rabbit Monoclonal Antibody (ARM516)

CAT. NO. ARM6806

KEY FEATURES

Target	Ksp-cadherin	Clone ID	ARM516
Source / Host	Rabbit	Reactivity	Human
Applications	IHC	Dilution	1:100-1:200
Clonality	Monoclonal	Storage	-20°C

BACKGROUND

Ksp-cadherin, also known as kidney-specific cadherin, is a cell adhesion molecule that is found exclusively in the basolateral membrane of renal tubular epithelial cells and collecting duct cells of the kidney, but not in glomerulus, renal interstitial cells, nor blood vessels. Ksp-cadherin has been identified as a potentially useful marker in differentiating between chromophobe renal-cell carcinoma and oncocytoma, as one study has found a membranous pattern of staining in 96% of 30 chromophobe carcinomas, and in only 6% of 31 oncocytomas. Cadherins have also been investigated in renal cell cancers, demonstrating that a loss of cadherins is potentially correlated to tumour differentiation and the presence of lymph node metastasis.

APPLICATION

To ensure optimal assay performance, AREX recommends conducting reagent titration tailored to each testing system for optimal detection results.

Application	IHC
Dilution Ratio	1:100-1:200

*Results are sample-specific. Please refer to your local assay conditions and test parameters for reference.

PRODUCT OVERVIEW

Antibody Type	Primary antibodies
Isotype	IgG
Positive Control	Kidney
Localization	
Form / Buffer	Tris Buffer, pH 7.3 - 7.7, with 1% BSA and <0.1% Sodium Azide
Purification	Purified
Conjugation	Unconjugated
Gene Symbol	CDH16
Entrez Gene ID	1014
Uniprot	O75309
Alternative Names	Cadherin-16, Kidney-specific cadherin

*AREX continuously optimizes our products. Webpage content may not reflect the latest updates. For inquiries, please contact info@arexbio.com or your local distributor.

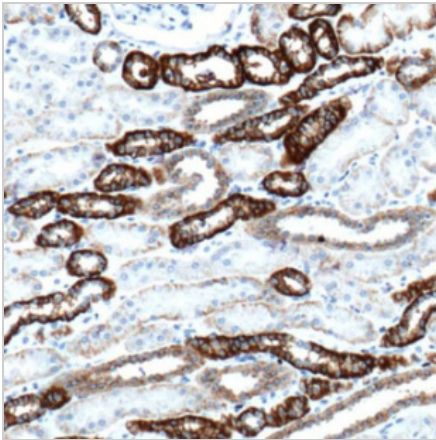
*Clone Number, Reactivity, Source/Host and Clonality can be found in the product name and Key Features section above.

DATASHEET**Ksp-cadherin Rabbit Monoclonal Antibody (ARM516)**

CAT. NO. ARM6806

STORAGE

Store at 4°C short term. For long term storage, store at -20°C, avoiding freeze/thaw cycles.

DATA

Immunohistochemical staining of human kidney tissue using Ksp-cadherin Rabbit Monoclonal Antibody (ARM516).

RESEARCH USE ONLY

For Research Use Only. Not for diagnostic, therapeutics, prophylactic or in vivo use.

More information: [www.arexbio.com / ksp-cadherin-mouse-monoclonal-antibody-arm516-arm6806](http://www.arexbio.com/ksp-cadherin-mouse-monoclonal-antibody-arm516-arm6806)