

DATASHEET

Lysozyme Rabbit Monoclonal Antibody (ARM520)

CAT. NO. ARM6810

KEY FEATURES

Target	Lysozyme	Clone ID	ARM520
Source / Host	Rabbit	Reactivity	Human
Applications	IHC	Dilution	1:100-1:200
Clonality	Monoclonal	Storage	-20°C

BACKGROUND

Lysozyme is an enzyme present in and released via many mucosal secretions of the body, including tears and saliva. It functions to kill bacteria by hydrolyzing the polysaccharide component of the bacterial cell wall. Anti-Lysozyme stains myeloid cells, histiocytes, granulocytes, macrophages, and monocytes. The enzyme is clinically useful in demonstrating the myeloid or monocytic nature of acute leukemia, and may also be a suitable aid in the classification of lymphoproliferative disorders, and in the identification of histiocytic neoplasias and large lymphocytes.

APPLICATION

To ensure optimal assay performance, AREX recommends conducting reagent titration tailored to each testing system for optimal detection results.

Application	IHC
Dilution Ratio	1:100-1:200

*Results are sample-specific. Please refer to your local assay conditions and test parameters for reference.

PRODUCT OVERVIEW

Antibody Type	Primary antibodies
Isotype	IgG
Positive Control	Tonsil
Localization	Cytoplasmic
Form / Buffer	Tris Buffer, pH 7.3 - 7.7, with 1% BSA and <0.1% Sodium Azide
Purification	Purified
Conjugation	Unconjugated
Gene Symbol	LYZ
Entrez Gene ID	4069
Uniprot	P61626
Alternative Names	LZM, Muramidase

*AREX continuously optimizes our products. Webpage content may not reflect the latest updates. For inquiries, please contact info@arexbio.com or your local distributor.

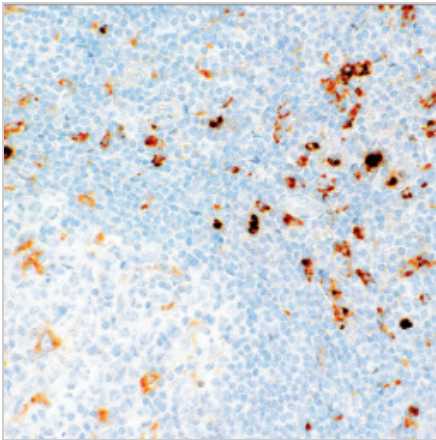
*Clone Number, Reactivity, Source/Host and Clonality can be found in the product name and Key Features section above.

DATASHEET**Lysozyme Rabbit Monoclonal Antibody (ARM520)**

CAT. NO. ARM6810

STORAGE

Store at 4°C short term. For long term storage, store at -20°C, avoiding freeze/thaw cycles.

DATA

Immunohistochemical staining of human tonsil tissue using Lysozyme Rabbit Monoclonal Antibody (ARM520).

RESEARCH USE ONLY

For Research Use Only. Not for diagnostic, therapeutics, prophylactic or in vivo use.

More information: www.arexbio.com/lysozyme-mouse-monoclonal-antibody-arm520-arm6810