

DATASHEET

Macrophage Mouse Monoclonal Antibody (ARM521)

CAT. NO. ARM6811

KEY FEATURES

Target	Macrophage	Clone ID	ARM521
Source / Host	Mouse	Reactivity	Human
Applications	IHC	Dilution	1:100-1:200
Clonality	Monoclonal	Storage	-20°C

BACKGROUND

Macrophages are a type of white blood cell present in essentially all tissues, functioning in host defense via phagocytosis and pinocytosis. Macrophages digest and present antigens to T- and B-lymphocytes, and also work to secrete complement components, coagulation factors, many regulatory molecules including interferon and interleukin 1, as well as some prostaglandins and leukotrienes. Macrophages are associated with a large proportion of malignant tumours, and have been reported as a promising target for cancer therapies due to their angiogenesis-promoting and trophic roles. Anti Macrophage, also known as HAM-56, detects tingible body macrophages found in the germinal centers of lymph nodes, as well as a subpopulation of endothelial cells, namely those of the capillaries and smaller blood vessels. Anti-Macrophage also reacts with interdigitating macrophages of lymph nodes and tissue macrophages, Kupffer cells of the liver, and alveolar macrophages of the lung.

APPLICATION

To ensure optimal assay performance, AREX recommends conducting reagent titration tailored to each testing system for optimal detection results.

Application	IHC
Dilution Ratio	1:100-1:200

*Results are sample-specific. Please refer to your local assay conditions and test parameters for reference.

PRODUCT OVERVIEW

Antibody Type	Primary antibodies
Isotype	IgM
Positive Control	Tonsil Tissues
Localization	Cytoplasmic
Form / Buffer	Tris Buffer, pH 7.3 - 7.7, with 1% BSA and <0.1% Sodium Azide
Purification	Purified
Conjugation	Unconjugated
Gene Symbol	CD68
Entrez Gene ID	968
Uniprot	P34059
Alternative Names	Commonly refers to CD68 / MAC387

*AREX continuously optimizes our products. Webpage content may not reflect the latest updates. For inquiries, please contact info@arexbio.com or your local distributor.

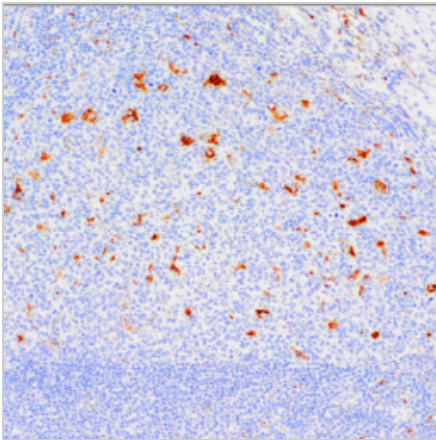
*Clone Number, Reactivity, Source/Host and Clonality can be found in the product name and Key Features section above.

DATASHEET**Macrophage Mouse Monoclonal Antibody (ARM521)**

CAT. NO. ARM6811

STORAGE

Store at 4°C short term. For long term storage, store at -20°C, avoiding freeze/thaw cycles.

DATA

Immunohistochemical staining of human tonsil tissue using Macrophage Mouse Monoclonal Antibody (ARM521).

RESEARCH USE ONLY

For Research Use Only. Not for diagnostic, therapeutics, prophylactic or in vivo use.

More information: [www.arexbio.com / macrophage-mouse-monoclonal-antibody-arm521-arm6811](http://www.arexbio.com/macrophage-mouse-monoclonal-antibody-arm521-arm6811)