

DATASHEET

Mammaglobin Rabbit Monoclonal Antibody (ARM522)

CAT. NO. ARM6812

KEY FEATURES

Target	Mammaglobin	Clone ID	ARM522
Source / Host	Rabbit	Reactivity	Human
Applications	IHC	Dilution	1:100-1:200
Clonality	Monoclonal	Storage	-20°C

BACKGROUND

Mammaglobin is a glycoprotein associated with the human breast, as the gene is expressed solely in the adult mammary gland. A link between the glycoprotein and breast cancer has been reported, as high levels of mammaglobin mRNA are present in human breast cancer cell lines and primary breast cancers. Studies have shown that mammaglobin is a highly specific marker that can aid in determining breast origin in the setting of metastatic carcinoma, as well as correlating with several prognostic factors of breast cancer, including lymph node involvement.

APPLICATION

To ensure optimal assay performance, AREX recommends conducting reagent titration tailored to each testing system for optimal detection results.

Application	IHC
Dilution Ratio	1:100-1:200

*Results are sample-specific. Please refer to your local assay conditions and test parameters for reference.

PRODUCT OVERVIEW

Antibody Type	Primary antibodies
Isotype	IgG
Positive Control	Breast Carcinoma
Localization	Cytoplasmic
Form / Buffer	Tris Buffer, pH 7.3 - 7.7, with 1% BSA and <0.1% Sodium Azide
Purification	Purified
Conjugation	Unconjugated
Gene Symbol	SCGB2A2
Entrez Gene ID	4250
Uniprot	Q99674
Alternative Names	Mammaglobin-A, Secretoglobin family 2A member 2

*AREX continuously optimizes our products. Webpage content may not reflect the latest updates. For inquiries, please contact info@arexbio.com or your local distributor.

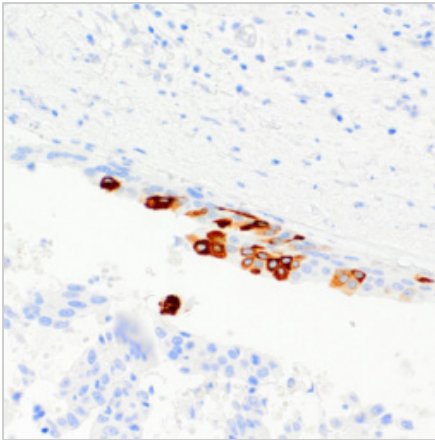
*Clone Number, Reactivity, Source/Host and Clonality can be found in the product name and Key Features section above.

DATASHEET**Mammaglobin Rabbit Monoclonal Antibody (ARM522)**

CAT. NO. ARM6812

STORAGE

Store at 4°C short term. For long term storage, store at -20°C, avoiding freeze/thaw cycles.

DATA

Immunohistochemical staining of human breast cancer tissue using Mammaglobin Rabbit Monoclonal Antibody (ARM522).

RESEARCH USE ONLY

For Research Use Only. Not for diagnostic, therapeutics, prophylactic or in vivo use.

More information: www.arexbio.com/mammaglobin-mouse-monoclonal-antibody-arm522-arm6812