

DATASHEET

p21 Mouse Monoclonal Antibody (ARM542)

CAT. NO. ARM6832

KEY FEATURES

Target	p21	Clone ID	ARM542
Source / Host	Mouse	Reactivity	Human
Applications	IHC	Dilution	1:100-1:200
Clonality	Monoclonal	Storage	-20°C

BACKGROUND

p21, also known as p21^{Cip1}, p21^{Waf1}, Cyclin-Dependent Kinase Inhibitor 1, or CDK-Interacting Protein 1, functions to regulate cell cycle progression at G1 by inhibiting the activity of Cyclin-CDK2 or -CDK4 complexes. This cyclin-dependent kinase inhibitor is expressed in all adult human tissues, and decreased expression of p21 is linked to poor prognosis in a number of carcinomas including gastric carcinoma, non-small cell lung carcinoma, and thyroid carcinoma. p21 is also associated with favourable prognosis in several tumours.

APPLICATION

To ensure optimal assay performance, AREX recommends conducting reagent titration tailored to each testing system for optimal detection results.

Application	IHC
Dilution Ratio	1:100-1:200

*Results are sample-specific. Please refer to your local assay conditions and test parameters for reference.

PRODUCT OVERVIEW

Antibody Type	Primary antibodies
Isotype	IgG2a
Positive Control	Colon tissues
Localization	Cytoplasmic, Nuclear
Form / Buffer	Tris Buffer, pH 7.3 - 7.7, with 1% BSA and <0.1% Sodium Azide
Purification	Purified
Conjugation	Unconjugated
Gene Symbol	CDKN1A
Entrez Gene ID	1026
Uniprot	P38936
Alternative Names	CAP20; CDKN1; CIP1; MDA6; PIC1; SDI1; WAF1; Cyclin-dependent kinase inhibitor 1; CDK-interacting protein 1; Melanoma differentiation-associated protein 6; MDA-6; p21

*AREX continuously optimizes our products. Webpage content may not reflect the latest updates. For inquiries, please contact info@arexbio.com or your local distributor.

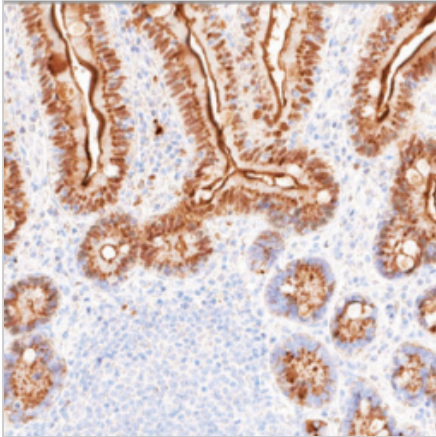
*Clone Number, Reactivity, Source/Host and Clonality can be found in the product name and Key Features section above.

DATASHEET**p21 Mouse Monoclonal Antibody (ARM542)**

CAT. NO. ARM6832

STORAGE

Store at 4°C short term. For long term storage, store at -20°C, avoiding freeze/thaw cycles.

DATA

Immunohistochemical staining of human small intestine tissue using p21 Mouse Monoclonal Antibody (ARM542).

RESEARCH USE ONLY

For Research Use Only. Not for diagnostic, therapeutics, prophylactic or in vivo use.

More information: [www.arexbio.com / p21-mouse-monoclonal-antibody-arm542-arm6832](http://www.arexbio.com/p21-mouse-monoclonal-antibody-arm542-arm6832)