

## DATASHEET

# PCNA Mouse Monoclonal Antibody (ARM548)

CAT. NO. ARM6838

### KEY FEATURES

Target	PCNA	Clone ID	ARM548
Source / Host	Mouse	Reactivity	Human
Applications	IHC	Dilution	1:100-1:200
Clonality	Monoclonal	Storage	-20°C

### BACKGROUND

Proliferating cell nuclear antigen, also known as PCNA, is a nuclear protein that correlates with cell proliferation in early G1 phase and S phase of the cell cycle.

### APPLICATION

To ensure optimal assay performance, AREX recommends conducting reagent titration tailored to each testing system for optimal detection results.

Application	IHC
Dilution Ratio	1:100-1:200

\*Results are sample-specific. Please refer to your local assay conditions and test parameters for reference.

### PRODUCT OVERVIEW

Antibody Type	Primary antibodies
Isotype	IgG1
Positive Control	Breast Cancer, Prostate Cancer
Localization	Nuclear
Form / Buffer	Tris Buffer, pH 7.3 - 7.7, with 1% BSA and <0.1% Sodium Azide
Purification	Purified
Conjugation	Unconjugated
Gene Symbol	PCNA
Entrez Gene ID	5111
Uniprot	P12004
Alternative Names	Proliferating cell nuclear antigen; PCNA; Cyclin

\*AREX continuously optimizes our products. Webpage content may not reflect the latest updates. For inquiries, please contact [info@arexbio.com](mailto:info@arexbio.com) or your local distributor.

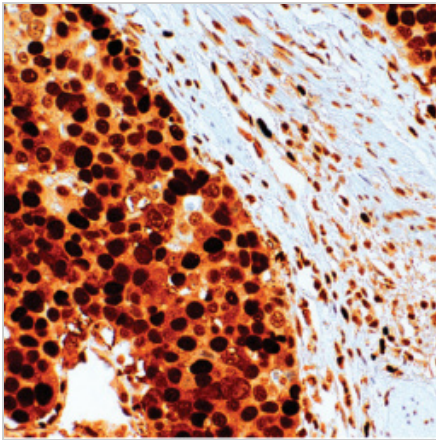
\*Clone Number, Reactivity, Source/Host and Clonality can be found in the product name and Key Features section above.

**DATASHEET****PCNA Mouse Monoclonal Antibody (ARM548)**

CAT. NO. ARM6838

**STORAGE**

Store at 4°C short term. For long term storage, store at -20°C, avoiding freeze/thaw cycles.

**DATA**

Immunohistochemical staining of human stomach tissue using PCNA Mouse Monoclonal Antibody (ARM548).

**RESEARCH USE ONLY**

For Research Use Only. Not for diagnostic, therapeutics, prophylactic or in vivo use.

More information: [www.arexbio.com/pcna-mouse-monoclonal-antibody-arm548-arm6838](http://www.arexbio.com/pcna-mouse-monoclonal-antibody-arm548-arm6838)