

DATASHEET

PD-L1-TEC Rabbit Monoclonal Antibody (ARM551)

CAT. NO. ARM6841

KEY FEATURES

Target	PD-L1-TEC	Clone ID	ARM551
Source / Host	Rabbit	Reactivity	Human
Applications	IHC	Dilution	1:100-1:200
Clonality	Monoclonal	Storage	-20°C

BACKGROUND

Programmed Death-Ligand 1 (PD-L1), CD274, or B7 Homolog 1 (B7-H1), is a transmembrane protein involved in suppressing the immune system and rendering tumour cells resistant to lysis through binding of the Programmed Death-1 (PD-1) receptor. Overexpression of PD-L1 may allow cancer cells to evade the actions of the host immune system. In renal cell carcinoma, upregulation of PD-L1 has been linked to increased tumour aggressiveness and risk of death. When considered in adjunct with CD8+ tumour-infiltrating lymphocyte density, expression levels of PD-L1 may be a useful predictor of multiple cancer types, including stage III non-small-cell lung cancer, hormone receptor negative breast cancer, and sentinel lymph node melanoma.

APPLICATION

To ensure optimal assay performance, AREX recommends conducting reagent titration tailored to each testing system for optimal detection results.

Application	IHC
Dilution Ratio	1:100-1:200

*Results are sample-specific. Please refer to your local assay conditions and test parameters for reference.

PRODUCT OVERVIEW

Antibody Type	Primary antibodies
Isotype	IgG
Positive Control	Tonsil, Lung Adenocarcinoma
Localization	Membranous, Cytoplasmic
Form / Buffer	Tris Buffer, pH 7.3 - 7.7, with 1% BSA and <0.1% Sodium Azide
Purification	Purified
Conjugation	Unconjugated
Gene Symbol	PDCD1
Entrez Gene ID	5133
Uniprot	Q15116
Alternative Names	Programmed cell death 1, CD279

*AREX continuously optimizes our products. Webpage content may not reflect the latest updates. For inquiries, please contact info@arexbio.com or your local distributor.

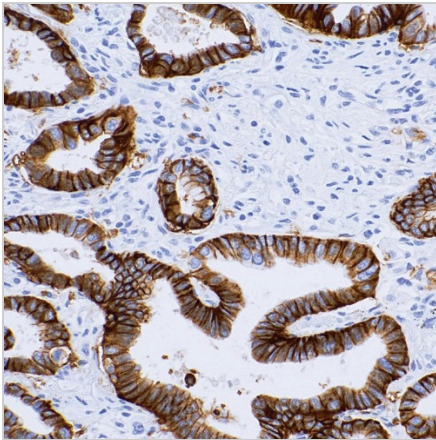
*Clone Number, Reactivity, Source/Host and Clonality can be found in the product name and Key Features section above.

DATASHEET**PD-L1-TEC Rabbit Monoclonal Antibody (ARM551)**

CAT. NO. ARM6841

STORAGE

Store at 4°C short term. For long term storage, store at -20°C, avoiding freeze/thaw cycles.

DATA

Immunohistochemical staining of human lung cancer tissue using PD-L1-TEC Rabbit Monoclonal Antibody (ARM551).

RESEARCH USE ONLY

For Research Use Only. Not for diagnostic, therapeutics, prophylactic or in vivo use.

More information: [www.arexbio.com / pd-l1-tec-mouse-monoclonal-antibody-arm551-arm6841](http://www.arexbio.com/pd-l1-tec-mouse-monoclonal-antibody-arm551-arm6841)