

## DATASHEET

# Prolactin Mouse Monoclonal Antibody (ARM556)

CAT. NO. ARM6846

### KEY FEATURES

Target	Prolactin	Clone ID	ARM556
Source / Host	Mouse	Reactivity	Human
Applications	IHC	Dilution	1:100-1:200
Clonality	Monoclonal	Storage	-20°C

### BACKGROUND

Prolactin (PRL) is a peptide hormone synthesized and secreted by lactotroph cells in the adenohypophysis (anterior pituitary gland). PRL plays a role in a number of processes including cell growth, reproduction, and immune function, with its primary function being associated with lactation. Anti-Prolactin reacts with lactotroph cells, and is useful in the classification of pituitary tumours and the study of pituitary disease.

### APPLICATION

To ensure optimal assay performance, AREX recommends conducting reagent titration tailored to each testing system for optimal detection results.

Application	IHC
Dilution Ratio	1:100-1:200

\*Results are sample-specific. Please refer to your local assay conditions and test parameters for reference.

### PRODUCT OVERVIEW

Antibody Type	Primary antibodies
Isotype	IgG2
Positive Control	Pituitary
Localization	Cytoplasmic
Form / Buffer	Tris Buffer, pH 7.3 - 7.7, with 1% BSA and <0.1% Sodium Azide
Purification	Purified
Conjugation	Unconjugated
Gene Symbol	PRL
Entrez Gene ID	5617
Uniprot	P01236
Alternative Names	Prolactin; PRL

\*AREX continuously optimizes our products. Webpage content may not reflect the latest updates. For inquiries, please contact [info@arexbio.com](mailto:info@arexbio.com) or your local distributor.

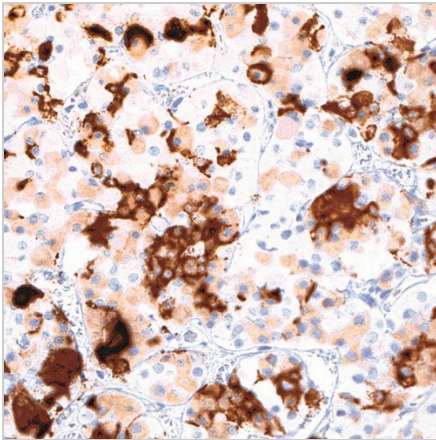
\*Clone Number, Reactivity, Source/Host and Clonality can be found in the product name and Key Features section above.

**DATASHEET****Prolactin Mouse Monoclonal Antibody (ARM556)**

CAT. NO. ARM6846

**STORAGE**

Store at 4°C short term. For long term storage, store at -20°C, avoiding freeze/thaw cycles.

**DATA**

Immunohistochemical staining of human pituitary gland tissue using Prolactin Mouse Monoclonal Antibody (ARM556).

**RESEARCH USE ONLY**

For Research Use Only. Not for diagnostic, therapeutics, prophylactic or in vivo use.

More information: [www.arexbio.com/prolactin-mouse-monoclonal-antibody-arm556-arm6846](http://www.arexbio.com/prolactin-mouse-monoclonal-antibody-arm556-arm6846)