

DATASHEET

PTEN Rabbit Monoclonal Antibody (ARM558)

CAT. NO. ARM6848

KEY FEATURES

Target	PTEN	Clone ID	ARM558
Source / Host	Rabbit	Reactivity	Human
Applications	IHC	Dilution	1:100-1:200
Clonality	Monoclonal	Storage	-20°C

BACKGROUND

PTEN (phosphatase and tensin homolog) is a tumor suppressor that negatively regulates the PI3K-AKT signaling pathway. Loss of PTEN function has been implicated in the pathogenesis of a number of different tumors, particularly endometrial cancer.

APPLICATION

To ensure optimal assay performance, AREX recommends conducting reagent titration tailored to each testing system for optimal detection results.

Application	IHC
Dilution Ratio	1:100-1:200

*Results are sample-specific. Please refer to your local assay conditions and test parameters for reference.

PRODUCT OVERVIEW

Antibody Type	Primary antibodies
Isotype	IgG, Kappa
Positive Control	Breast cancer, prostate cancer
Localization	Cytoplasmic, Nuclear
Form / Buffer	Tris Buffer, pH 7.3 - 7.7, with 1% BSA and <0.1% Sodium Azide
Purification	Purified
Conjugation	Unconjugated
Gene Symbol	PTEN
Entrez Gene ID	5728
Uniprot	P60484
Alternative Names	MMAC1; TEP1; Phosphatidylinositol 3,4,5-trisphosphate 3-phosphatase and dual-specificity protein phosphatase PTEN; Mutated in multiple advanced cancers 1; Phosphatase and tensin homolog

*AREX continuously optimizes our products. Webpage content may not reflect the latest updates. For inquiries, please contact info@arexbio.com or your local distributor.

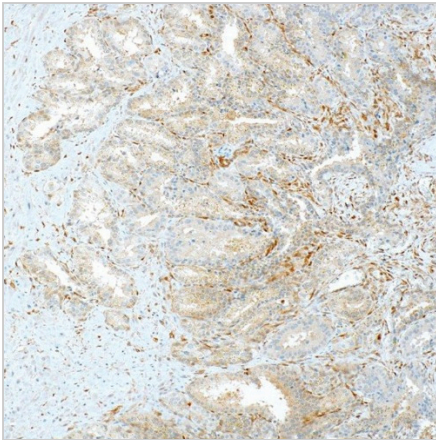
*Clone Number, Reactivity, Source/Host and Clonality can be found in the product name and Key Features section above.

DATASHEET**PTEN Rabbit Monoclonal Antibody (ARM558)**

CAT. NO. ARM6848

STORAGE

Store at 4°C short term. For long term storage, store at -20°C, avoiding freeze/thaw cycles.

DATA

Immunohistochemical staining of human breast tissue using PTEN Rabbit Monoclonal Antibody (ARM558).

RESEARCH USE ONLY

For Research Use Only. Not for diagnostic, therapeutics, prophylactic or in vivo use.

More information: [www.arexbio.com / pten-mouse-monoclonal-antibody-arm558-arm6848](http://www.arexbio.com/pten-mouse-monoclonal-antibody-arm558-arm6848)