

DATASHEET

RCC Mouse Monoclonal Antibody (ARM559)

CAT. NO. ARM6849

KEY FEATURES

Target	RCC	Clone ID	ARM559
Source / Host	Mouse	Reactivity	Human
Applications	IHC	Dilution	1:100-1:200
Clonality	Monoclonal	Storage	-20°C

BACKGROUND

Renal cell carcinoma (RCC), also known as a gurnistical tumor, is a common form of adult kidney cancer arising from the renal tubule. It is notoriously resistant to chemotherapy and radiation therapy, so the clinical outcome is usually poor in advantage RCC. This antibody can be used to classify the Primary Renal Cell Carcinomas and Metastatic Renal Cell Carcinomas due to its immunoreactivities of approximately 90% and 85, respectively.

APPLICATION

To ensure optimal assay performance, AREX recommends conducting reagent titration tailored to each testing system for optimal detection results.

Application	IHC
Dilution Ratio	1:100-1:200

*Results are sample-specific. Please refer to your local assay conditions and test parameters for reference.

PRODUCT OVERVIEW

Antibody Type	Primary antibodies
Isotype	IgG1, kappa
Positive Control	Kidney, Renal Cell Carcinoma
Localization	Membranous, Cytoplasmic
Form / Buffer	Tris Buffer, pH 7.3 - 7.7, with 1% BSA and <0.1% Sodium Azide
Purification	Purified
Conjugation	Unconjugated
Gene Symbol	CD10 (Common MAb)
Entrez Gene ID	4284
Uniprot	P08473
Alternative Names	Renal cell carcinoma marker, Gp200

*AREX continuously optimizes our products. Webpage content may not reflect the latest updates. For inquiries, please contact info@arexbio.com or your local distributor.

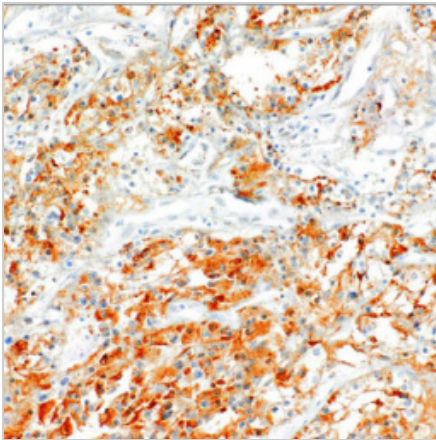
*Clone Number, Reactivity, Source/Host and Clonality can be found in the product name and Key Features section above.

DATASHEET**RCC Mouse Monoclonal Antibody (ARM559)**

CAT. NO. ARM6849

STORAGE

Store at 4°C short term. For long term storage, store at -20°C, avoiding freeze/thaw cycles.

DATA

Immunohistochemical staining of human kidney tissue using RCC Mouse Monoclonal Antibody (ARM559).

RESEARCH USE ONLY

For Research Use Only. Not for diagnostic, therapeutics, prophylactic or in vivo use.

More information: [www.arexbio.com / rcc-mouse-monoclonal-antibody-arm559-arm6849](http://www.arexbio.com/rcc-mouse-monoclonal-antibody-arm559-arm6849)