

DATASHEET

ROS1 Rabbit Monoclonal Antibody (ARM560)

CAT. NO. ARM6850

KEY FEATURES

Target	ROS1	Clone ID	ARM560
Source / Host	Rabbit	Reactivity	Human
Applications	IHC	Dilution	1:100-1:200
Clonality	Monoclonal	Storage	-20°C

BACKGROUND

ROS1 serves as a receptor tyrosine kinase. Gene rearrangement events involving ROS1 have been described in lung and other cancers, and such tumours have been found to be remarkably responsive to small molecule tyrosine kinase inhibitors. Multiple studies have observed ROS1 gene rearrangement events in approximately 1% of lung cancers and showed that inhibition of tumour cells bearing ROS1 gene fusions by crizotinib or other ROS1 tyrosine kinase inhibitors was effective in vitro.

APPLICATION

To ensure optimal assay performance, AREX recommends conducting reagent titration tailored to each testing system for optimal detection results.

Application	IHC
Dilution Ratio	1:100-1:200

*Results are sample-specific. Please refer to your local assay conditions and test parameters for reference.

PRODUCT OVERVIEW

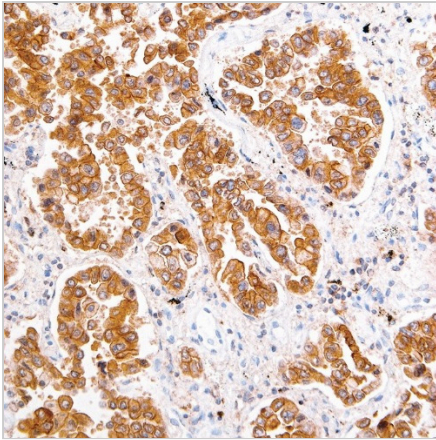
Antibody Type	Primary antibodies
Isotype	IgG
Positive Control	ROS1 Fusion NSCLC
Localization	Cytoplasmic
Form / Buffer	Tris Buffer, pH 7.3 - 7.7, with 1% BSA and <0.1% Sodium Azide
Purification	Purified
Conjugation	Unconjugated
Gene Symbol	ROS1
Entrez Gene ID	6098
Uniprot	P08922
Alternative Names	ROS proto-oncogene 1, receptor tyrosine kinase

*AREX continuously optimizes our products. Webpage content may not reflect the latest updates. For inquiries, please contact info@arexbio.com or your local distributor.

*Clone Number, Reactivity, Source/Host and Clonality can be found in the product name and Key Features section above.

DATASHEET**ROS1 Rabbit Monoclonal Antibody (ARM560)****CAT. NO. ARM6850****| STORAGE**

Store at 4°C short term. For long term storage, store at -20°C, avoiding freeze/thaw cycles.

| DATA

Immunohistochemical staining of human lung cancer tissue using ROS1 Rabbit Monoclonal Antibody (ARM560).

| RESEARCH USE ONLY

For Research Use Only. Not for diagnostic, therapeutics, prophylactic or in vivo use.

More information: [www.arexbio.com / ros1-mouse-monoclonal-antibody-arm560-arm6850](http://www.arexbio.com/ros1-mouse-monoclonal-antibody-arm560-arm6850)