

DATASHEET

SAA1 Mouse Monoclonal Antibody (ARM562)

CAT. NO. ARM6852

KEY FEATURES

| | | | |
|---------------|------------|------------|-------------|
| Target | SAA1 | Clone ID | ARM562 |
| Source / Host | Mouse | Reactivity | Human |
| Applications | IHC | Dilution | 1:100-1:200 |
| Clonality | Monoclonal | Storage | -20°C |

BACKGROUND

Serum Amyloid A1 (SAA1) is a member of the serum amyloid A family of apolipoproteins. Highly inducible SAA1 is an acute phase protein expressed in response to tissue injury and chronic inflammatory disease. The recent studies also suggest SAA1 is associated with tumour pathogenesis contributing to certain types of malignant tumors.

APPLICATION

To ensure optimal assay performance, AREX recommends conducting reagent titration tailored to each testing system for optimal detection results.

| | |
|----------------|-------------|
| Application | IHC |
| Dilution Ratio | 1:100-1:200 |

*Results are sample-specific. Please refer to your local assay conditions and test parameters for reference.

PRODUCT OVERVIEW

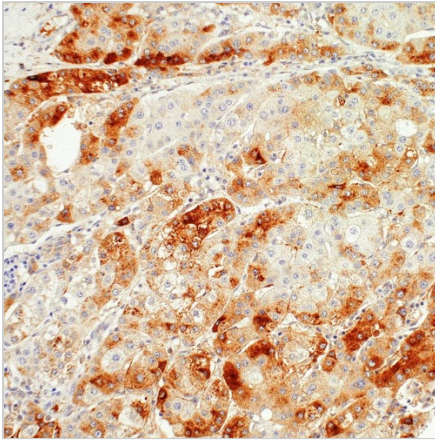
| | |
|-------------------|---|
| Antibody Type | Primary antibodies |
| Isotype | IgG2b, kappa |
| Positive Control | Liver |
| Localization | Secreted, Cytoplasmic |
| Form / Buffer | Tris Buffer, pH 7.3 - 7.7, with 1% BSA and <0.1% Sodium Azide |
| Purification | Purified |
| Conjugation | Unconjugated |
| Gene Symbol | SAA1 |
| Entrez Gene ID | 6288 |
| Uniprot | P0DJ18 |
| Alternative Names | Serum amyloid A-1 protein |

*AREX continuously optimizes our products. Webpage content may not reflect the latest updates. For inquiries, please contact info@arexbio.com or your local distributor.

*Clone Number, Reactivity, Source/Host and Clonality can be found in the product name and Key Features section above.

DATASHEET**SAA1 Mouse Monoclonal Antibody (ARM562)****CAT. NO. ARM6852****| STORAGE**

Store at 4°C short term. For long term storage, store at -20°C, avoiding freeze/thaw cycles.

| DATA

Immunohistochemical staining of human liver tissue using SAA1 Mouse Monoclonal Antibody (ARM562).

| RESEARCH USE ONLY

For Research Use Only. Not for diagnostic, therapeutics, prophylactic or in vivo use.

More information: [www.arexbio.com / saa1-mouse-monoclonal-antibody-arm562-arm6852](http://www.arexbio.com/saa1-mouse-monoclonal-antibody-arm562-arm6852)