

## DATASHEET

# Smoothelin Mouse Monoclonal Antibody (ARM564)

CAT. NO. ARM6854

### KEY FEATURES

Target	Smoothelin	Clone ID	ARM564
Source / Host	Mouse	Reactivity	Human
Applications	IHC	Dilution	1:100-1:200
Clonality	Monoclonal	Storage	-20°C

### BACKGROUND

Smoothelin is a protein found explicitly in the cytoskeletal component of differentiated (contractile) smooth muscle cells, while being absent from myofibroblasts, myoepithelial cells, and skeletal and cardiac muscle. Anti-Smoothelin is often used as an aid in staging bladder carcinoma, as overexpression of the smoothelin protein is characteristic of muscularis propria invasion, while negative or weak staining is indicative of muscularis mucosae and the non-invasive form of the cancer. Anti-Smoothelin is also useful in differentiating benign smooth muscle tumours from malignant smooth muscle tumours.

### APPLICATION

To ensure optimal assay performance, AREX recommends conducting reagent titration tailored to each testing system for optimal detection results.

Application	IHC
Dilution Ratio	1:100-1:200

\*Results are sample-specific. Please refer to your local assay conditions and test parameters for reference.

### PRODUCT OVERVIEW

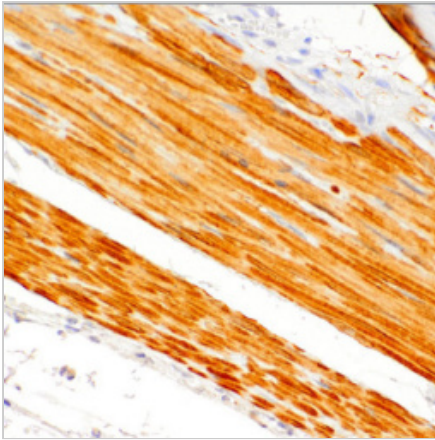
Antibody Type	Primary antibodies
Isotype	IgG1
Positive Control	Bladder, Smooth muscle tissues
Localization	Cytoplasmic
Form / Buffer	Tris Buffer, pH 7.3 - 7.7, with 1% BSA and <0.1% Sodium Azide
Purification	Purified
Conjugation	Unconjugated
Gene Symbol	SMTN
Entrez Gene ID	6525
Uniprot	P53814
Alternative Names	SMSMO; Smoothelin

\*AREX continuously optimizes our products. Webpage content may not reflect the latest updates. For inquiries, please contact [info@arexbio.com](mailto:info@arexbio.com) or your local distributor.

\*Clone Number, Reactivity, Source/Host and Clonality can be found in the product name and Key Features section above.

**DATASHEET****Smoothelin Mouse Monoclonal Antibody (ARM564)****CAT. NO. ARM6854****| STORAGE**

Store at 4°C short term. For long term storage, store at -20°C, avoiding freeze/thaw cycles.

**| DATA**

Immunohistochemical staining of human smooth muscle tissue using Smoothelin Mouse Monoclonal Antibody (ARM564).

**| RESEARCH USE ONLY**

For Research Use Only. Not for diagnostic, therapeutics, prophylactic or in vivo use.

More information: [www.arexbio.com / smoothelin-mouse-monoclonal-antibody-arm564-arm6854](http://www.arexbio.com/smoothelin-mouse-monoclonal-antibody-arm564-arm6854)