

## DATASHEET

# SOX-11 Mouse Monoclonal Antibody (ARM566)

CAT. NO. ARM6856

### KEY FEATURES

Target	SOX-11	Clone ID	ARM566
Source / Host	Mouse	Reactivity	Human
Applications	IHC	Dilution	1:100-1:200
Clonality	Monoclonal	Storage	-20°C

### BACKGROUND

SRY (Sex Determining Region Y)-Box 11 (SOX11), also known as Transcription Factor SOX11, is a nuclear transcription factor that acts in regulation of embryonic development, cell differentiation, and the development of the human central nervous system. SOX11 is expressed in medulloblastoma and glioma, and has been indicated as a marker for both Cyclin D1-positive and -negative mantle cell lymphomas, Burkitt's lymphoma, and lymphoblastic lymphoma.

### APPLICATION

To ensure optimal assay performance, AREX recommends conducting reagent titration tailored to each testing system for optimal detection results.

Application	IHC
Dilution Ratio	1:100-1:200

\*Results are sample-specific. Please refer to your local assay conditions and test parameters for reference.

### PRODUCT OVERVIEW

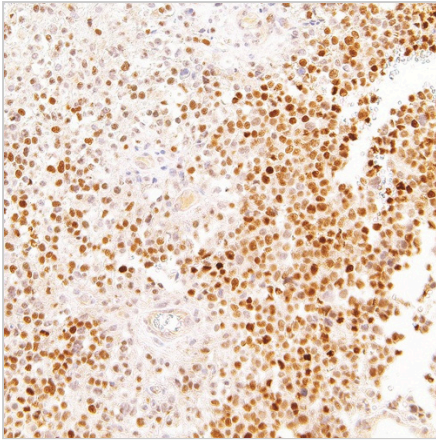
Antibody Type	Primary antibodies
Isotype	IgG1
Positive Control	Mantle Cell Lymphoma
Localization	Nuclear
Form / Buffer	Tris Buffer, pH 7.3 - 7.7, with 1% BSA and <0.1% Sodium Azide
Purification	Purified
Conjugation	Unconjugated
Gene Symbol	SOX11
Entrez Gene ID	6664
Uniprot	P35716
Alternative Names	SRY-box transcription factor 11

\*AREX continuously optimizes our products. Webpage content may not reflect the latest updates. For inquiries, please contact [info@arexbio.com](mailto:info@arexbio.com) or your local distributor.

\*Clone Number, Reactivity, Source/Host and Clonality can be found in the product name and Key Features section above.

**DATASHEET****SOX-11 Mouse Monoclonal Antibody (ARM566)****CAT. NO. ARM6856****| STORAGE**

Store at 4°C short term. For long term storage, store at -20°C, avoiding freeze/thaw cycles.

**| DATA**

Immunohistochemical staining of human mantle cell lymphoma tissue sections using SOX-11 Mouse Monoclonal Antibody (ARM566).

**| RESEARCH USE ONLY**

For Research Use Only. Not for diagnostic, therapeutics, prophylactic or in vivo use.

More information: [www.arexbio.com / sox-11-mouse-monoclonal-antibody-arm566-arm6856](http://www.arexbio.com/sox-11-mouse-monoclonal-antibody-arm566-arm6856)