

## DATASHEET

# SOX-2 Rabbit Monoclonal Antibody (ARM567)

CAT. NO. ARM6857

### KEY FEATURES

Target	SOX-2	Clone ID	ARM567
Source / Host	Rabbit	Reactivity	Human
Applications	IHC	Dilution	1:100-1:200
Clonality	Monoclonal	Storage	-20°C

### BACKGROUND

SOX-2 is a transcription factor, and together with OCT4 it regulates other genes expression. included in the panel of other markers, SOX-2 can be use to classify the germ cell tumors.

### APPLICATION

To ensure optimal assay performance, AREX recommends conducting reagent titration tailored to each testing system for optimal detection results.

Application	IHC
Dilution Ratio	1:100-1:200

\*Results are sample-specific. Please refer to your local assay conditions and test parameters for reference.

### PRODUCT OVERVIEW

Antibody Type	Primary antibodies
Isotype	IgG
Positive Control	Lung Squamous Carcinoma
Localization	Nuclear
Form / Buffer	Tris Buffer, pH 7.3 - 7.7, with 1% BSA and <0.1% Sodium Azide
Purification	Purified
Conjugation	Unconjugated
Gene Symbol	SOX2
Entrez Gene ID	6657
Uniprot	P48431
Alternative Names	SRY-box transcription factor 2

\*AREX continuously optimizes our products. Webpage content may not reflect the latest updates. For inquiries, please contact [info@arexbio.com](mailto:info@arexbio.com) or your local distributor.

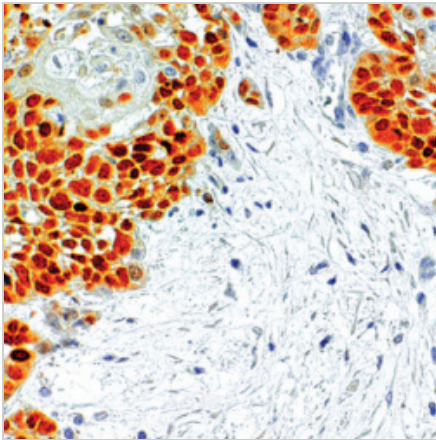
\*Clone Number, Reactivity, Source/Host and Clonality can be found in the product name and Key Features section above.

**DATASHEET****SOX-2 Rabbit Monoclonal Antibody (ARM567)**

CAT. NO. ARM6857

**STORAGE**

Store at 4°C short term. For long term storage, store at -20°C, avoiding freeze/thaw cycles.

**DATA**

Immunohistochemical staining of human lung squamous cell carcinoma tissue using SOX-2 Rabbit Monoclonal Antibody (ARM567).

**RESEARCH USE ONLY**

For Research Use Only. Not for diagnostic, therapeutics, prophylactic or in vivo use.

More information: [www.arexbio.com / sox-2-mouse-monoclonal-antibody-arm567-arm6857](http://www.arexbio.com/sox-2-mouse-monoclonal-antibody-arm567-arm6857)