

DATASHEET

SPNS2 Mouse Monoclonal Antibody (ARM568)

CAT. NO. ARM6858

KEY FEATURES

Target	SPNS2	Clone ID	ARM568
Source / Host	Mouse	Reactivity	Human
Applications	IHC	Dilution	1:100-1:200
Clonality	Monoclonal	Storage	-20°C

BACKGROUND

SPNS2 is a sphingolipid transporter expressed in the extraembryonic yolk syncytial layer (YSL). SPNS2 is required of migration of myocardial precursors, since it contributes in sphingosine 1-phosphate (S1P) secretion, which is a mediator that plays critical roles in cardiovascular, immunological, and neural development and function.

APPLICATION

To ensure optimal assay performance, AREX recommends conducting reagent titration tailored to each testing system for optimal detection results.

Application	IHC
Dilution Ratio	1:100-1:200

*Results are sample-specific. Please refer to your local assay conditions and test parameters for reference.

PRODUCT OVERVIEW

Antibody Type	Primary antibodies
Isotype	IgG1
Positive Control	Intestine
Localization	Cytoplasmic
Form / Buffer	Tris Buffer, pH 7.3 - 7.7, with 1% BSA and <0.1% Sodium Azide
Purification	Purified
Conjugation	Unconjugated
Gene Symbol	SPNS2
Entrez Gene ID	124976
Uniprot	Q8IVW8
Alternative Names	Protein spinster homolog 2

*AREX continuously optimizes our products. Webpage content may not reflect the latest updates. For inquiries, please contact info@arexbio.com or your local distributor.

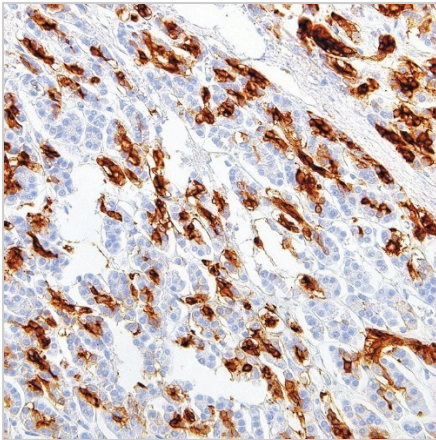
*Clone Number, Reactivity, Source/Host and Clonality can be found in the product name and Key Features section above.

DATASHEET**SPNS2 Mouse Monoclonal Antibody (ARM568)**

CAT. NO. ARM6858

STORAGE

Store at 4°C short term. For long term storage, store at -20°C, avoiding freeze/thaw cycles.

DATA

Immunohistochemical staining of human intestine tissue using SPNS2 Mouse Monoclonal Antibody (ARM568).

RESEARCH USE ONLY

For Research Use Only. Not for diagnostic, therapeutics, prophylactic or in vivo use.

More information: [www.arexbio.com / spns2-mouse-monoclonal-antibody-arm568-arm6858](http://www.arexbio.com/spns2-mouse-monoclonal-antibody-arm568-arm6858)