

DATASHEET

Stathmin Mouse Monoclonal Antibody (ARM570)

CAT. NO. ARM6860

KEY FEATURES

Target	Stathmin	Clone ID	ARM570
Source / Host	Mouse	Reactivity	Human
Applications	IHC	Dilution	1:100-1:200
Clonality	Monoclonal	Storage	-20°C

BACKGROUND

Stathmin regulates microtubule dynamics in the cell cycle. It is present in all tissues, but is most pronounced in constantly proliferating cell types. Anti-Stathmin staining has been found to correlate with cervical intraepithelial neoplasia (CIN) grade, with CIN 3 presenting the greatest expression and CIN 1 displaying the least expression of stathmin.

APPLICATION

To ensure optimal assay performance, AREX recommends conducting reagent titration tailored to each testing system for optimal detection results.

Application	IHC
Dilution Ratio	1:100-1:200

*Results are sample-specific. Please refer to your local assay conditions and test parameters for reference.

PRODUCT OVERVIEW

Antibody Type	Primary antibodies
Isotype	IgG1
Positive Control	Tonsil, Cervical tissues
Localization	Cytoplasmic
Form / Buffer	Tris Buffer, pH 7.3 - 7.7, with 1% BSA and <0.1% Sodium Azide
Purification	Purified
Conjugation	Unconjugated
Gene Symbol	STMN1
Entrez Gene ID	3925
Uniprot	P16949
Alternative Names	Oncoprotein 18, Op18

*AREX continuously optimizes our products. Webpage content may not reflect the latest updates. For inquiries, please contact info@arexbio.com or your local distributor.

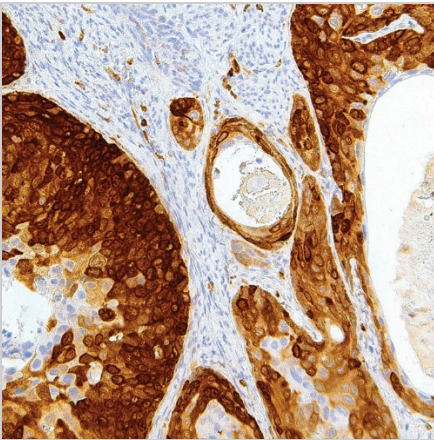
*Clone Number, Reactivity, Source/Host and Clonality can be found in the product name and Key Features section above.

DATASHEET**Stathmin Mouse Monoclonal Antibody (ARM570)**

CAT. NO. ARM6860

STORAGE

Store at 4°C short term. For long term storage, store at -20°C, avoiding freeze/thaw cycles.

DATA

Immunohistochemical staining of human cervical cancer tissue using Stathmin Mouse Monoclonal Antibody (ARM570).

RESEARCH USE ONLY

For Research Use Only. Not for diagnostic, therapeutics, prophylactic or in vivo use.

More information: www.arexbio.com/stathmin-mouse-monoclonal-antibody-arm570-arm6860