

DATASHEET

T-bet Rabbit Monoclonal Antibody (ARM574)

CAT. NO. ARM6864

KEY FEATURES

Target	T-bet	Clone ID	ARM574
Source / Host	Rabbit	Reactivity	Human
Applications	IHC	Dilution	1:100-1:200
Clonality	Monoclonal	Storage	-20°C

BACKGROUND

T-bet is a transcription factor present in CD4+ T-cells. Anti-T-bet stains mature T-lymphocytes, but is scarcely present in T helper cells. Nuclear staining is observed in the interfollicular T-cell zone of reactive lymphoid tissue (tonsil, lymph node, and spleen) and absent in germinal centers, mantle zones, and marginal zones. Anti-T-bet also stains certain B-cell lymphoproliferative disorders, such as precursor B-cell lymphoblastic leukemia and lymphoblastic lymphoma, and B-cell neoplasms from mature B-cells, marginal zone lymphoma, and hairy cell leukemia. Anti-T-bet is useful for identifying B cell and T-cell lymphoproliferative disorders, as it does not stain B-cell neoplasms from the pre-germinal center or germinal center B-cells, such as mantle cell lymphoma, follicular lymphoma, diffuse large B-cell lymphoma, and Burkitt lymphoma.

APPLICATION

To ensure optimal assay performance, AREX recommends conducting reagent titration tailored to each testing system for optimal detection results.

Application	IHC
Dilution Ratio	1:100-1:200

*Results are sample-specific. Please refer to your local assay conditions and test parameters for reference.

PRODUCT OVERVIEW

Antibody Type	Primary antibodies
Isotype	IgG
Positive Control	Hairy Cell Leukemia, Tonsil
Localization	Nuclear
Form / Buffer	Tris Buffer, pH 7.3 - 7.7, with 1% BSA and <0.1% Sodium Azide
Purification	Purified
Conjugation	Unconjugated
Gene Symbol	TBX21
Entrez Gene ID	30009
Uniprot	Q9UL17
Alternative Names	TBET; TBLYM; T-box transcription factor TBX21; T-box protein 21; T-cell-specific T-box transcription factor T-bet; Transcription factor TBLYM

*AREX continuously optimizes our products. Webpage content may not reflect the latest updates. For inquiries, please contact info@arexbio.com or your local distributor.

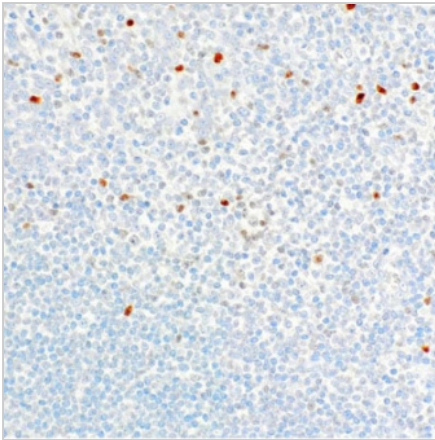
*Clone Number, Reactivity, Source/Host and Clonality can be found in the product name and Key Features section above.

DATASHEET**T-bet Rabbit Monoclonal Antibody (ARM574)**

CAT. NO. ARM6864

STORAGE

Store at 4°C short term. For long term storage, store at -20°C, avoiding freeze/thaw cycles.

DATA

Immunohistochemical staining of human tonsil tissue using T-bet Rabbit Monoclonal Antibody (ARM574).

RESEARCH USE ONLY

For Research Use Only. Not for diagnostic, therapeutics, prophylactic or in vivo use.

More information: [www.arexbio.com / t-bet-mouse-monoclonal-antibody-arm574-arm6864](http://www.arexbio.com/t-bet-mouse-monoclonal-antibody-arm574-arm6864)