

DATASHEET

TFE3 Rabbit Monoclonal Antibody (ARM575)

CAT. NO. ARM6865

KEY FEATURES

Target	TFE3	Clone ID	ARM575
Source / Host	Rabbit	Reactivity	Human
Applications	IHC	Dilution	1:100-1:200
Clonality	Monoclonal	Storage	-20°C

BACKGROUND

Transcription Factor E3 (TFE3) is a transcription factor that binds to the MUE3-type E-box sequences involved in TGF- β signaling. Anti-TFE3 staining is the most sensitive and specific indicator of Xp11 translocation renal cell carcinomas. Since alveolar soft part sarcoma (ASPS) is characterized by a specific chromosomal rearrangement resulting in a chimeric transcription factor (ASPSCR1-TFE3), this TFE3 IVD antibody is also a useful diagnostic tool for recognizing ASPS.

APPLICATION

To ensure optimal assay performance, AREX recommends conducting reagent titration tailored to each testing system for optimal detection results.

Application	IHC
Dilution Ratio	1:100-1:200

*Results are sample-specific. Please refer to your local assay conditions and test parameters for reference.

PRODUCT OVERVIEW

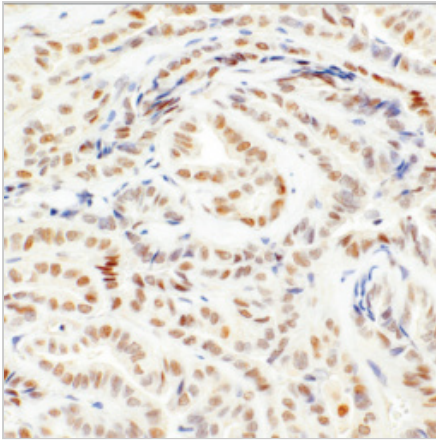
Antibody Type	Primary antibodies
Isotype	IgG
Positive Control	Testes, Melanoma, Xp11.2 Translocation Renal Cell Carcinoma
Localization	Nuclear
Form / Buffer	Tris Buffer, pH 7.3 - 7.7, with 1% BSA and <0.1% Sodium Azide
Purification	Purified
Conjugation	Unconjugated
Gene Symbol	TFE3
Entrez Gene ID	7030
Uniprot	P19532
Alternative Names	BHLHE33; Transcription factor E3; Class E basic helix-loop-helix protein 33; bHLHe33

*AREX continuously optimizes our products. Webpage content may not reflect the latest updates. For inquiries, please contact info@arexbio.com or your local distributor.

*Clone Number, Reactivity, Source/Host and Clonality can be found in the product name and Key Features section above.

DATASHEET**TFE3 Rabbit Monoclonal Antibody (ARM575)****CAT. NO. ARM6865****| STORAGE**

Store at 4°C short term. For long term storage, store at -20°C, avoiding freeze/thaw cycles.

| DATA

Immunohistochemical staining of human thyroid carcinoma tissue using TFE3 Rabbit Monoclonal Antibody (ARM575).

| RESEARCH USE ONLY

For Research Use Only. Not for diagnostic, therapeutics, prophylactic or in vivo use.

More information: [www.arexbio.com / tfe3-mouse-monoclonal-antibody-arm575-arm6865](http://www.arexbio.com/tfe3-mouse-monoclonal-antibody-arm575-arm6865)