

DATASHEET

TOP2A Mouse Monoclonal Antibody (ARM581)

CAT. NO. ARM6871

KEY FEATURES

Target	TOP2A	Clone ID	ARM581
Source / Host	Mouse	Reactivity	Human
Applications	IHC	Dilution	1:100-1:200
Clonality	Monoclonal	Storage	-20°C

BACKGROUND

Topoisomerase II alpha (TOP2A) is a member of a highly conserved group of enzymes that plays important roles in synthesis and transcription of DNA as well as chromosomal segregation during mitosis. The overexpression of TOP2A has been correlated with increased risk of progression in various cancers, and it has been a target for the development of anti-polymerase inhibitors to treat cancer.

APPLICATION

To ensure optimal assay performance, AREX recommends conducting reagent titration tailored to each testing system for optimal detection results.

Application	IHC
Dilution Ratio	1:100-1:200

*Results are sample-specific. Please refer to your local assay conditions and test parameters for reference.

PRODUCT OVERVIEW

Antibody Type	Primary antibodies
Isotype	IgG1
Positive Control	Tonsil
Localization	Nuclear
Form / Buffer	Tris Buffer, pH 7.3 - 7.7, with 1% BSA and <0.1% Sodium Azide
Purification	Purified
Conjugation	Unconjugated
Gene Symbol	TOP2A
Entrez Gene ID	7153
Uniprot	P11388
Alternative Names	DNA topoisomerase 2-alpha

*AREX continuously optimizes our products. Webpage content may not reflect the latest updates. For inquiries, please contact info@arexbio.com or your local distributor.

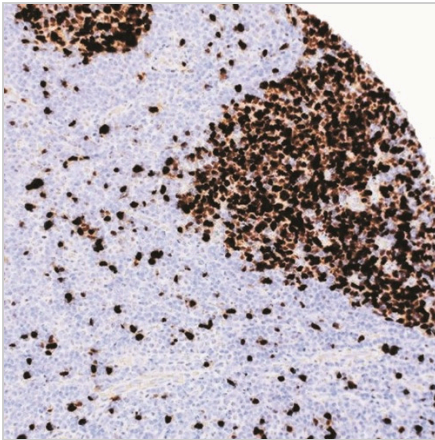
*Clone Number, Reactivity, Source/Host and Clonality can be found in the product name and Key Features section above.

DATASHEET**TOP2A Mouse Monoclonal Antibody (ARM581)**

CAT. NO. ARM6871

STORAGE

Store at 4°C short term. For long term storage, store at -20°C, avoiding freeze/thaw cycles.

DATA

Immunohistochemical staining of human tonsil tissue using TOP2A Mouse Monoclonal Antibody (ARM581).

RESEARCH USE ONLY

For Research Use Only. Not for diagnostic, therapeutics, prophylactic or in vivo use.

More information: www.arexbio.com/top2a-mouse-monoclonal-antibody-arm581-arm6871