

DATASHEET

TSH Mouse Monoclonal Antibody (ARM583)

CAT. NO. ARM6873

KEY FEATURES

Target	TSH	Clone ID	ARM583
Source / Host	Mouse	Reactivity	Human
Applications	IHC	Dilution	1:100-1:200
Clonality	Monoclonal	Storage	-20°C

BACKGROUND

Thyroid-Stimulating Hormone (TSH) is secreted by thyrotrope cells in the anterior pituitary gland. Anti-TSH stains thyrotrophs and is useful for categorizing pituitary tumours, as well as for recognizing primary and metastatic pituitary gland tumours.

APPLICATION

To ensure optimal assay performance, AREX recommends conducting reagent titration tailored to each testing system for optimal detection results.

Application	IHC
Dilution Ratio	1:100-1:200

*Results are sample-specific. Please refer to your local assay conditions and test parameters for reference.

PRODUCT OVERVIEW

Antibody Type	Primary antibodies
Isotype	IgG1
Positive Control	Pituitary tissues
Localization	Cytoplasmic
Form / Buffer	Tris Buffer, pH 7.3 - 7.7, with 1% BSA and <0.1% Sodium Azide
Purification	Purified
Conjugation	Unconjugated
Gene Symbol	TSHB
Entrez Gene ID	7252
Uniprot	P01222
Alternative Names	Thyroid-stimulating hormone beta subunit

*AREX continuously optimizes our products. Webpage content may not reflect the latest updates. For inquiries, please contact info@arexbio.com or your local distributor.

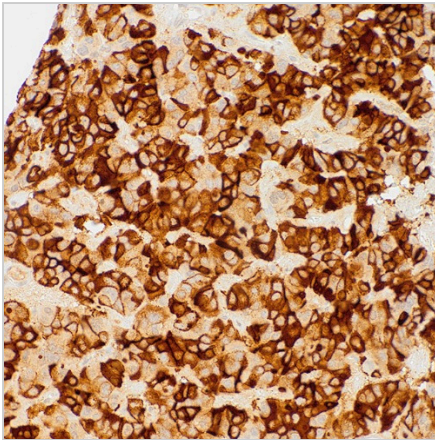
*Clone Number, Reactivity, Source/Host and Clonality can be found in the product name and Key Features section above.

DATASHEET**TSH Mouse Monoclonal Antibody (ARM583)**

CAT. NO. ARM6873

STORAGE

Store at 4°C short term. For long term storage, store at -20°C, avoiding freeze/thaw cycles.

DATA

Immunohistochemical staining of human pituitary tissue sections using TSH Mouse Monoclonal Antibody (ARM583).

RESEARCH USE ONLY

For Research Use Only. Not for diagnostic, therapeutics, prophylactic or in vivo use.

More information: [www.arexbio.com / tsh-mouse-monoclonal-antibody-arm583-arm6873](http://www.arexbio.com/tsh-mouse-monoclonal-antibody-arm583-arm6873)