

DATASHEET

WT1 Mouse Monoclonal Antibody (ARM586)

CAT. NO. ARM6876

KEY FEATURES

Target	WT1	Clone ID	ARM586
Source / Host	Mouse	Reactivity	Human
Applications	IHC	Dilution	1:100-1:200
Clonality	Monoclonal	Storage	-20°C

BACKGROUND

Wilms' Tumour Protein (WT1) is a transcription factor involved in the development of the urogenital system. Anti-WT1 is utilized in the differential diagnosis of pulmonary malignancies (nuclei staining) and small round cell tumours. Ewing's sarcomas, primitive neuroectodermal tumours, neuroblastomas, rhabdomyosarcomas, and rhabdoid tumours do not stain with Anti-WT1, but cytoplasmic staining may be observed. Although lung adenocarcinomas do not exhibit nuclear staining with Anti-WT1, the antibody may stain the cytoplasm. Anti-WT1 also stains serous ovarian carcinomas, but does not stain mucinous carcinomas of the ovary and pancreatobiliary carcinomas.

APPLICATION

To ensure optimal assay performance, AREX recommends conducting reagent titration tailored to each testing system for optimal detection results.

Application	IHC
Dilution Ratio	1:100-1:200

*Results are sample-specific. Please refer to your local assay conditions and test parameters for reference.

PRODUCT OVERVIEW

Antibody Type	Primary antibodies
Isotype	IgG1
Positive Control	Ovarian Serous Carcinoma, Mesothelioma,
Localization	Nuclear, Cytoplasmic
Form / Buffer	Tris Buffer, pH 7.3 - 7.7, with 1% BSA and <0.1% Sodium Azide
Purification	Purified
Conjugation	Unconjugated
Gene Symbol	WT1
Entrez Gene ID	7490
Uniprot	P19544
Alternative Names	Wilms tumor protein 1

*AREX continuously optimizes our products. Webpage content may not reflect the latest updates. For inquiries, please contact info@arexbio.com or your local distributor.

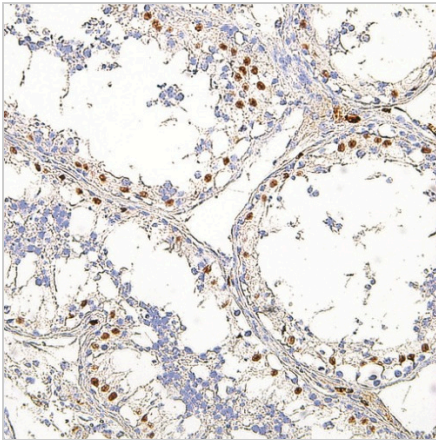
*Clone Number, Reactivity, Source/Host and Clonality can be found in the product name and Key Features section above.

DATASHEET**WT1 Mouse Monoclonal Antibody (ARM586)**

CAT. NO. ARM6876

STORAGE

Store at 4°C short term. For long term storage, store at -20°C, avoiding freeze/thaw cycles.

DATA

Immunohistochemical staining of human testis tissue using WT1 Mouse Monoclonal Antibody (ARM586).

RESEARCH USE ONLY

For Research Use Only. Not for diagnostic, therapeutics, prophylactic or in vivo use.

More information: www.arexbio.com/wt1-mouse-monoclonal-antibody-arm586-arm6876