

DATASHEET

VEGF Mouse Monoclonal Antibody (ARM589)

CAT. NO. ARM6879

KEY FEATURES

Target	VEGF	Clone ID	ARM589
Source / Host	Mouse	Reactivity	Human
Applications	IHC	Dilution	1:50-1:200
Clonality	Monoclonal	Storage	-20°C

BACKGROUND

Vascular Endothelial Growth Factor (VEGF) promotes vasculogenesis and angiogenesis, and mainly affects the vascular endothelium. VEGF is associated with poor prognoses of breast carcinomas, and has been shown to be elevated in rheumatoid arthritis.

APPLICATION

To ensure optimal assay performance, AREX recommends conducting reagent titration tailored to each testing system for optimal detection results.

Application	IHC
Dilution Ratio	1:50-1:200

*Results are sample-specific. Please refer to your local assay conditions and test parameters for reference.

PRODUCT OVERVIEW

Antibody Type	Primary antibodies
Isotype	IgG1
Positive Control	Breast, Kidney tissues
Localization	Cytoplasmic
Form / Buffer	Tris Buffer, pH 7.3 - 7.7, with 1% BSA and <0.1% Sodium Azide
Purification	Purified
Conjugation	Unconjugated
Gene Symbol	VEGFA
Entrez Gene ID	7422
Uniprot	P15692
Alternative Names	Vascular endothelial growth factor A, VEGF-A

*AREX continuously optimizes our products. Webpage content may not reflect the latest updates. For inquiries, please contact info@arexbio.com or your local distributor.

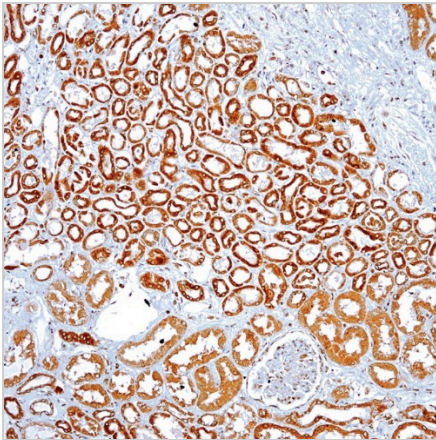
*Clone Number, Reactivity, Source/Host and Clonality can be found in the product name and Key Features section above.

DATASHEET**VEGF Mouse Monoclonal Antibody (ARM589)**

CAT. NO. ARM6879

STORAGE

Store at 4°C short term. For long term storage, store at -20°C, avoiding freeze/thaw cycles.

DATA

Immunohistochemical staining of human kidney tissue using VEGF Mouse Monoclonal Antibody (ARM589).

RESEARCH USE ONLY

For Research Use Only. Not for diagnostic, therapeutics, prophylactic or in vivo use.

More information: www.arexbio.com/vegf-mouse-monoclonal-antibody-arm589-arm6879