

## DATASHEET

# Ep-CAM/Ber-EP Mouse Monoclonal Antibody (ARM912)

CAT. NO. ARM6880

### KEY FEATURES

Target	Ep-CAM/Ber-EP	Clone ID	ARM912
Source / Host	Mouse	Reactivity	Human
Applications	IHC	Dilution	1:50-1:200
Clonality	Monoclonal	Storage	-20°C

### BACKGROUND

Epithelial Cell Adhesion Molecule (EpCAM) is a transmembrane glycoprotein that mediates cell - cell adhesion in epithelia. It is normally present on most baso - lateral surfaces of normal epithelial cells and is absent in myoepithelial cells, hepatocytes, adult squamous epithelia, mesothelial cells, and fibroblasts. Anti - EpCAM stains most adenocarcinomas and neuroendocrine tumours, including small cell carcinomas. A minority of renal clear cell carcinoma, renal oncocytoma, and hepatocellular carcinoma stain positively for EpCAM, while Anti - EpCAM stains nearly all basal cell carcinoma. Anti - EpCAM stains chromophobe renal cell carcinoma, papillary renal cell carcinoma, and cholangiocarcinoma more frequently. Anti - EpCAM can be useful for distinguishing malignancy in the peritoneal and pleural cavities.

### APPLICATION

To ensure optimal assay performance, AREX recommends conducting reagent titration tailored to each testing system for optimal detection results.

Application	IHC
Dilution Ratio	1:50-1:200

\*Results are sample-specific. Please refer to your local assay conditions and test parameters for reference.

### PRODUCT OVERVIEW

Antibody Type	Primary antibodies
Isotype	IgG1
Positive Control	Colon Adenocarcinoma
Localization	Cytoplasmic
Form / Buffer	Tris Buffer, pH 7.3 - 7.7, with 1% BSA and <0.1% Sodium Azide
Purification	Purified
Conjugation	Unconjugated
Gene Symbol	EPCAM
Entrez Gene ID	4072
Uniprot	P16422
Alternative Names	Epithelial cell adhesion molecule, CD326, TACSTD1 (Tumor-associated calcium signal transducer 1), TROP1, Ber-EP4, MOC-31, GA733-2, ESA (Epithelial specific antigen), KSA, MK-1

\*AREX continuously optimizes our products. Webpage content may not reflect the latest updates. For inquiries, please contact [info@arexbio.com](mailto:info@arexbio.com) or your local distributor.

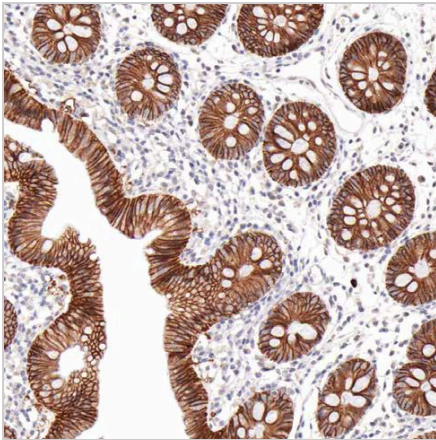
\*Clone Number, Reactivity, Source/Host and Clonality can be found in the product name and Key Features section above.

**DATASHEET****Ep-CAM/Ber-EP Mouse Monoclonal Antibody (ARM912)**

CAT. NO. ARM6880

**STORAGE**

Store at 4°C short term. For long term storage, store at -20°C, avoiding freeze/thaw cycles.

**DATA**

Immunohistochemistry (Formalin/PFA-fixed paraffin-embedded sections) analysis of Human colon sections labeling EpCAM with ARM912.

**RESEARCH USE ONLY**

For Research Use Only. Not for diagnostic, therapeutics, prophylactic or in vivo use.

More information: [www.arexbio.com/ep-cam-ber-ep-mouse-monoclonal-antibody-arm912-arm6880](http://www.arexbio.com/ep-cam-ber-ep-mouse-monoclonal-antibody-arm912-arm6880)