

DATASHEET

CXCL-13 Rabbit Monoclonal Antibody (ARM592)

CAT. NO. ARM6883

KEY FEATURES

Target	CXCL-13	Clone ID	ARM592
Source / Host	Rabbit	Reactivity	Human
Applications	IHC	Dilution	1:50-1:200
Clonality	Monoclonal	Storage	-20°C

BACKGROUND

CXCL13 is a B-cell chemoattractant that is expressed strongly in the liver, spleen and gut lymph nodes, while present in the appendix and stomach to a lesser degree. CXCL13 is useful as a marker for inflammation in the central nervous system, including Lyme neuroborreliosis, acute neuroborreliosis, multiple sclerosis, and infectious diseases such as typanosomiasis.

APPLICATION

To ensure optimal assay performance, AREX recommends conducting reagent titration tailored to each testing system for optimal detection results.

Application	IHC
Dilution Ratio	1:50-1:200

*Results are sample-specific. Please refer to your local assay conditions and test parameters for reference.

PRODUCT OVERVIEW

Antibody Type	Primary antibodies
Isotype	IgG
Positive Control	Tonsil
Localization	Cytoplasmic
Form / Buffer	Tris Buffer, pH 7.3 - 7.7, with 1% BSA and <0.1% Sodium Azide
Purification	Purified
Conjugation	Unconjugated
Gene Symbol	CXCL13
Entrez Gene ID	10563
Uniprot	O43927
Alternative Names	B-lymphocyte chemoattractant, BCA-1

*AREX continuously optimizes our products. Webpage content may not reflect the latest updates. For inquiries, please contact info@arexbio.com or your local distributor.

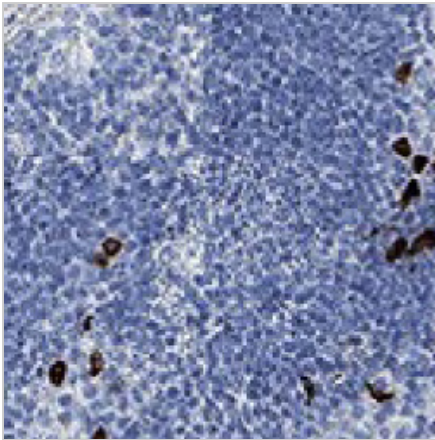
*Clone Number, Reactivity, Source/Host and Clonality can be found in the product name and Key Features section above.

DATASHEET**CXCL-13 Rabbit Monoclonal Antibody (ARM592)**

CAT. NO. ARM6883

STORAGE

Store at 4°C short term. For long term storage, store at -20°C, avoiding freeze/thaw cycles.

DATA

Immunohistochemical staining of human tonsil tissue sections using CXCL-13 Rabbit Monoclonal Antibody (ARM592).

RESEARCH USE ONLY

For Research Use Only. Not for diagnostic, therapeutics, prophylactic or in vivo use.

More information: [www.arexbio.com / cxcl-13-mouse-monoclonal-antibody-arm592-arm6883](http://www.arexbio.com/cxcl-13-mouse-monoclonal-antibody-arm592-arm6883)