

DATASHEET

Luteinizing Hormone (LH) Mouse Monoclonal Antibody (ARM593)

CAT. NO. ARM6884

KEY FEATURES

Target	Luteinizing Hormone (LH)	Clone ID	ARM593
Source / Host	Mouse	Reactivity	Human
Applications	IHC	Dilution	1:50-1:200
Clonality	Monoclonal	Storage	-20°C

BACKGROUND

Luteinizing Hormone (LH) is a reproductive hormone produced and secreted by the gonadotropes in the anterior pituitary gland. LH functions to stimulate ovulation in females and the production of testosterone from the Leydig cells in males. This hormone is useful for the study of pituitary disease, and acts as a clinical marker that is useful for classifying tumours of the pituitary.

APPLICATION

To ensure optimal assay performance, AREX recommends conducting reagent titration tailored to each testing system for optimal detection results.

Application	IHC
Dilution Ratio	1:50-1:200

*Results are sample-specific. Please refer to your local assay conditions and test parameters for reference.

PRODUCT OVERVIEW

Antibody Type	Primary antibodies
Isotype	IgG1
Positive Control	Pituitary tissues
Localization	Cytoplasmic
Form / Buffer	Tris Buffer, pH 7.3 - 7.7, with 1% BSA and <0.1% Sodium Azide
Purification	Purified
Conjugation	Unconjugated
Gene Symbol	LHB
Entrez Gene ID	3972
Uniprot	P01229
Alternative Names	Luteinizing hormone beta subunit

*AREX continuously optimizes our products. Webpage content may not reflect the latest updates. For inquiries, please contact info@arexbio.com or your local distributor.

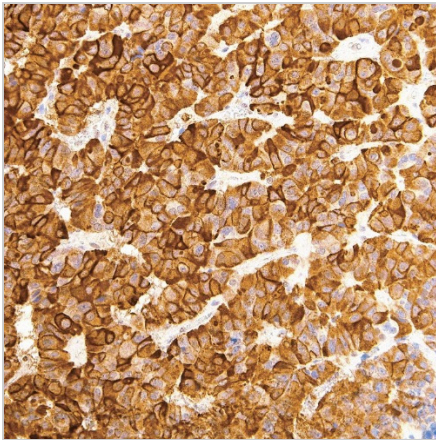
*Clone Number, Reactivity, Source/Host and Clonality can be found in the product name and Key Features section above.

DATASHEET**Luteinizing Hormone (LH) Mouse Monoclonal Antibody (ARM593)**

CAT. NO. ARM6884

STORAGE

Store at 4°C short term. For long term storage, store at -20°C, avoiding freeze/thaw cycles.

DATA

Immunohistochemical staining of human pituitary gland tissue sections using Luteinizing Hormone (LH) Mouse Monoclonal Antibody (ARM593).

RESEARCH USE ONLY

For Research Use Only. Not for diagnostic, therapeutics, prophylactic or in vivo use.

More information: [www.arexbio.com / luteinizing-hormone-\(lh\)-mouse-monoclonal-antibody-arm593-arm6884](http://www.arexbio.com/luteinizing-hormone-(lh)-mouse-monoclonal-antibody-arm593-arm6884)