

DATASHEET

BOB-1 Rabbit Monoclonal Antibody (ARM600)

CAT. NO. ARM6891

KEY FEATURES

Target	BOB-1	Clone ID	ARM600
Source / Host	Rabbit	Reactivity	Human
Applications	IHC	Dilution	1:50-1:200
Clonality	Monoclonal	Storage	-20°C

BACKGROUND

BOB-1 is a B-cell-specific coactivator whose expression majorly restricted to mature B-cells, and typically in germinal center B-cells. It is co-activator for Oct-1 and Oct-2 transcription factors. BOB-1 is used for B-lineage determination of CD20-plasmablastic or diffuse large B-cell lymphoma (DLBCL). BOB-1 was also presented to be useful marker when combined together with CD79a and Cyclin E for discriminating classical Hodgkin's lymphoma from primary mediastinal large B-cell lymphoma.

APPLICATION

To ensure optimal assay performance, AREX recommends conducting reagent titration tailored to each testing system for optimal detection results.

Application	IHC
Dilution Ratio	1:50-1:200

*Results are sample-specific. Please refer to your local assay conditions and test parameters for reference.

PRODUCT OVERVIEW

Antibody Type	Primary antibodies
Isotype	IgG
Positive Control	Tonsil
Localization	Cytoplasmic, Nuclear
Form / Buffer	Tris Buffer, pH 7.3 - 7.7, with 1% BSA and <0.1% Sodium Azide
Purification	Purified
Conjugation	Unconjugated
Gene Symbol	POU2AF1
Entrez Gene ID	5450
Uniprot	Q16633
Alternative Names	POU domain class 2-associating factor 1

*AREX continuously optimizes our products. Webpage content may not reflect the latest updates. For inquiries, please contact info@arexbio.com or your local distributor.

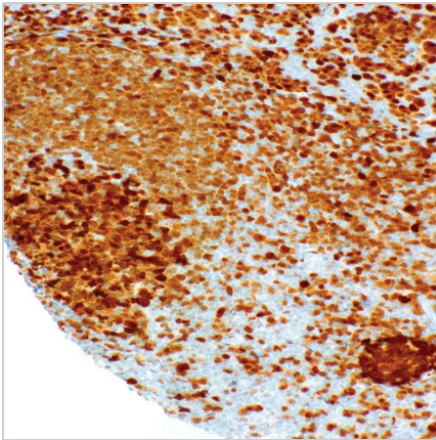
*Clone Number, Reactivity, Source/Host and Clonality can be found in the product name and Key Features section above.

DATASHEET**BOB-1 Rabbit Monoclonal Antibody (ARM600)**

CAT. NO. ARM6891

STORAGE

Store at 4°C short term. For long term storage, store at -20°C, avoiding freeze/thaw cycles.

DATA

Immunohistochemical staining of human tonsil tissue sections using BOB-1 Rabbit Monoclonal Antibody (ARM600).

RESEARCH USE ONLY

For Research Use Only. Not for diagnostic, therapeutics, prophylactic or in vivo use.

More information: [www.arexbio.com / bob-1-mouse-monoclonal-antibody-arm600-arm6891](http://www.arexbio.com/bob-1-mouse-monoclonal-antibody-arm600-arm6891)