

DATASHEET

Calretinin Mouse Monoclonal Antibody (ARM601)

CAT. NO. ARM6892

KEY FEATURES

Target	Calretinin	Clone ID	ARM601
Source / Host	Mouse	Reactivity	Human
Applications	IHC	Dilution	1:50-1:200
Clonality	Monoclonal	Storage	-20°C

BACKGROUND

Calretinin is a calcium-binding protein that functions as a modulator of neuronal excitability and may play a protective role in the survival of nerve cells during disturbances in calcium homeostasis. It is abundantly expressed in subsets of neurons throughout the brain and spinal cord, particularly retina and sensory ganglia, but it is also found in mesothelium, eccrine sweat glands, Sertoli cells, ovarian stromal cells, and adrenal cortical cells. Due to its high sensitivity against mesothelial cells, calretinin is a useful marker in differentiating mesothelioma and metastatic adenocarcinoma to the serous membranes. It is also a diagnostic marker of Hirschsprung's disease and some ovarian and testicular cancers such as Sertoli-Leydig cell tumour, Sertoli cell tumour, Leydig cell tumour, sex cord tumour with annular tubules, and steroid cell tumour.

APPLICATION

To ensure optimal assay performance, AREX recommends conducting reagent titration tailored to each testing system for optimal detection results.

Application	IHC
Dilution Ratio	1:50-1:200

*Results are sample-specific. Please refer to your local assay conditions and test parameters for reference.

PRODUCT OVERVIEW

Antibody Type	Primary antibodies
Isotype	IgG1
Positive Control	Mesothelioma, Appendix
Localization	Cytoplasmic, Nuclear
Form / Buffer	Tris Buffer, pH 7.3 - 7.7, with 1% BSA and <0.1% Sodium Azide
Purification	Purified
Conjugation	Unconjugated
Gene Symbol	CALB2
Entrez Gene ID	794
Uniprot	P22676
Alternative Names	CAB29; Calretinin; CR; 29 kDa calbindin

*AREX continuously optimizes our products. Webpage content may not reflect the latest updates. For inquiries, please contact info@arexbio.com or your local distributor.

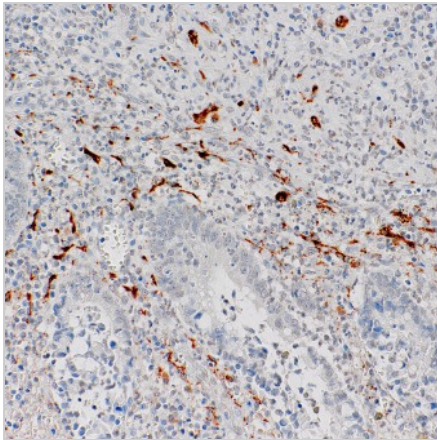
*Clone Number, Reactivity, Source/Host and Clonality can be found in the product name and Key Features section above.

DATASHEET**Calretinin Mouse Monoclonal Antibody (ARM601)**

CAT. NO. ARM6892

STORAGE

Store at 4°C short term. For long term storage, store at -20°C, avoiding freeze/thaw cycles.

DATA

Immunohistochemical staining of human appendix tissue using Calretinin Mouse Monoclonal Antibody (ARM601).

RESEARCH USE ONLY

For Research Use Only. Not for diagnostic, therapeutics, prophylactic or in vivo use.

More information: www.arexbio.com/calretinin-mouse-monoclonal-antibody-arm601-arm6892