

DATASHEET

CD13 Rabbit Monoclonal Antibody (ARM603)

CAT. NO. ARM6894

KEY FEATURES

Target	CD13	Clone ID	ARM603
Source / Host	Rabbit	Reactivity	Human
Applications	IHC	Dilution	1:50-1:100
Clonality	Monoclonal	Storage	-20°C

BACKGROUND

CD13, also known as aminopeptidase N, is a type II transmembrane glycoprotein that is expressed on most cells of Myeloid origin, and on certain epithelial cells, fibroblasts and osteoclasts. It serves as a zinc-binding metalloprotease involved in digestion and inactivation of some regulatory peptides such as enkephalins. IHC detection of CD13 may be used as a useful marker for identifying AML and hepatocellular carcinoma (HCC).

APPLICATION

To ensure optimal assay performance, AREX recommends conducting reagent titration tailored to each testing system for optimal detection results.

Application	IHC
Dilution Ratio	1:50-1:100

*Results are sample-specific. Please refer to your local assay conditions and test parameters for reference.

PRODUCT OVERVIEW

Antibody Type	Primary antibodies
Isotype	IgG
Positive Control	Liver
Localization	Cytoplasmic, Membranous
Form / Buffer	Tris Buffer, pH 7.3 - 7.7, with 1% BSA and <0.1% Sodium Azide
Purification	Purified
Conjugation	Unconjugated
Gene Symbol	ANPEP
Entrez Gene ID	290
Uniprot	P15144
Alternative Names	APN; CD13; PEPN; Aminopeptidase N; AP-N; hAPN; Alanyl aminopeptidase; Aminopeptidase M; AP-M; Microsomal aminopeptidase; Myeloid plasma membrane glycoprotein CD13; gp150; CD13

*AREX continuously optimizes our products. Webpage content may not reflect the latest updates. For inquiries, please contact info@arexbio.com or your local distributor.

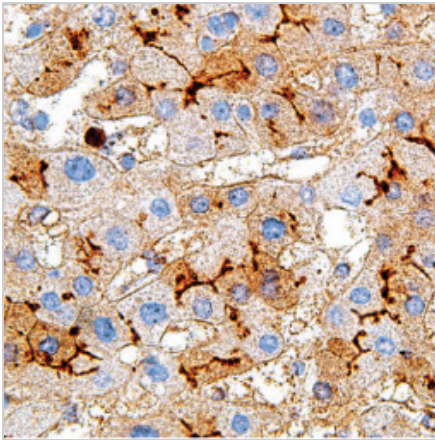
*Clone Number, Reactivity, Source/Host and Clonality can be found in the product name and Key Features section above.

DATASHEET**CD13 Rabbit Monoclonal Antibody (ARM603)**

CAT. NO. ARM6894

STORAGE

Store at 4°C short term. For long term storage, store at -20°C, avoiding freeze/thaw cycles.

DATA

Immunohistochemical staining of human liver tissue using CD13 Rabbit Monoclonal Antibody (ARM603).

RESEARCH USE ONLY

For Research Use Only. Not for diagnostic, therapeutics, prophylactic or in vivo use.

More information: [www.arexbio.com / cd13-mouse-monoclonal-antibody-arm603-arm6894](http://www.arexbio.com/cd13-mouse-monoclonal-antibody-arm603-arm6894)