

## DATASHEET

# CD35 Rabbit Monoclonal Antibody (ARM606)

CAT. NO. ARM6897

### KEY FEATURES

Target	CD35	Clone ID	ARM606
Source / Host	Rabbit	Reactivity	Human
Applications	IHC	Dilution	1:50-1:200
Clonality	Monoclonal	Storage	-20°C

### BACKGROUND

Cluster of Differentiation 35 (CD35), also known as Erythrocyte Complement Receptor 1 (CR1) or C3b/C4b, is commonly found on erythrocytes, B- and T-cells, monocytes, eosinophils, and neutrophils. It functions to mediate the clearance of opsonized targets. CD35 is a mature B-lymphocyte marker, and Anti-CD35 reacts positively with normal and tumorous follicular dendritic reticulum cells.

### APPLICATION

To ensure optimal assay performance, AREX recommends conducting reagent titration tailored to each testing system for optimal detection results.

Application	IHC
Dilution Ratio	1:50-1:200

\*Results are sample-specific. Please refer to your local assay conditions and test parameters for reference.

### PRODUCT OVERVIEW

Antibody Type	Primary antibodies
Isotype	IgG
Positive Control	Tonsil
Localization	Membranous
Form / Buffer	Tris Buffer, pH 7.3 - 7.7, with 1% BSA and <0.1% Sodium Azide
Purification	Purified
Conjugation	Unconjugated
Gene Symbol	CR1
Entrez Gene ID	1378
Uniprot	P17927
Alternative Names	C3BR; Complement receptor type 1; C3b/C4b receptor; CD35

\*AREX continuously optimizes our products. Webpage content may not reflect the latest updates. For inquiries, please contact [info@arexbio.com](mailto:info@arexbio.com) or your local distributor.

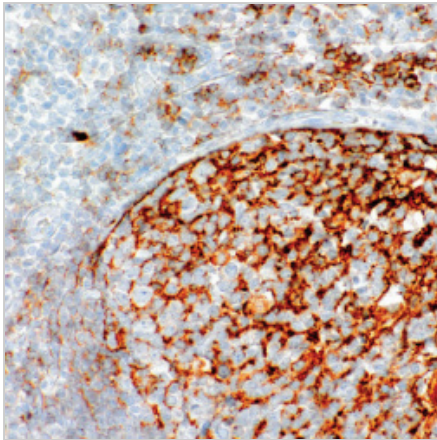
\*Clone Number, Reactivity, Source/Host and Clonality can be found in the product name and Key Features section above.

**DATASHEET****CD35 Rabbit Monoclonal Antibody (ARM606)**

CAT. NO. ARM6897

**STORAGE**

Store at 4°C short term. For long term storage, store at -20°C, avoiding freeze/thaw cycles.

**DATA**

Immunohistochemical staining of human tonsil tissue using CD35 Rabbit Monoclonal Antibody (ARM606).

**RESEARCH USE ONLY**

For Research Use Only. Not for diagnostic, therapeutics, prophylactic or in vivo use.

More information: [www.arexbio.com / cd35-mouse-monoclonal-antibody-arm606-arm6897](http://www.arexbio.com/cd35-mouse-monoclonal-antibody-arm606-arm6897)