

## DATASHEET

# CD38 Rabbit Monoclonal Antibody (ARM607)

CAT. NO. ARM6898

### KEY FEATURES

|               |            |            |            |
|---------------|------------|------------|------------|
| Target        | CD38       | Clone ID   | ARM607     |
| Source / Host | Rabbit     | Reactivity | Human      |
| Applications  | IHC        | Dilution   | 1:50-1:200 |
| Clonality     | Monoclonal | Storage    | -20°C      |

### BACKGROUND

Cluster of Differentiation 38 (CD38) is an ontogenesis marker in T-cells which is also expressed in erythrocytes, platelets, prostate epithelial cells, islet cells, smooth and striated muscle cells, renal tubules, and retinal ganglial cells. CD38(+) stained B-cells are mainly present in germinal centers of secondary lymphoid organs, while the marginal zone is usually negative. A panel of CD38, CD138, MUM1, and EMA is very useful for the diagnosis of immunodeficiency-related lymphoma, such as plasmablastic lymphoma, primary effusion lymphoma, and large B-cell lymphoma in Castleman's disease. Recent research has found a panel of CD38, CD44, and TCL-1 to be useful in recognizing large B-cell lymphoma with c-Myc gene rearrangement, making it important in differential diagnoses of diffuse large B-cell lymphoma, Burkitt's lymphoma, and B-cell lymphoma.

### APPLICATION

To ensure optimal assay performance, AREX recommends conducting reagent titration tailored to each testing system for optimal detection results.

|                |            |
|----------------|------------|
| Application    | IHC        |
| Dilution Ratio | 1:50-1:200 |

\*Results are sample-specific. Please refer to your local assay conditions and test parameters for reference.

### PRODUCT OVERVIEW

|                   |   |
|-------------------|---|
| Antibody Type     | Primary antibodies  |
| Isotype           | IgG   |
| Positive Control  | Tonsil  |
| Localization      | Membranous  |
| Form / Buffer     | Tris Buffer, pH 7.3 - 7.7, with 1% BSA and <0.1% Sodium Azide   |
| Purification      | Purified  |
| Conjugation       | Unconjugated  |
| Gene Symbol       | CD38  |
| Entrez Gene ID    | 952   |
| Uniprot           | P28907  |
| Alternative Names | ADP-ribosyl cyclase/cyclic ADP-ribose hydrolase 1; 2'-phospho-ADP-ribosyl cyclase; 2'-phospho-ADP-ribosyl cyclase/2'-phospho-cyclic-ADP-ribose transferase; 2'-phospho-cyclic-ADP-ribose transferase; ADP-ribosyl cyclase 1; ADPRC 1; Cyclic ADP-ribose hydrolase 1; cADPr hydrolase 1; T10; CD38 |

\*AREX continuously optimizes our products. Webpage content may not reflect the latest updates. For inquiries, please contact [info@arexbio.com](mailto:info@arexbio.com) or your local distributor.

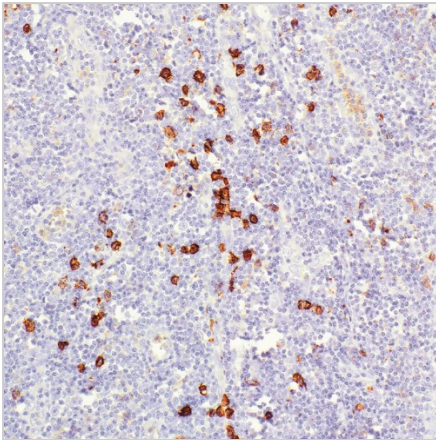
\*Clone Number, Reactivity, Source/Host and Clonality can be found in the product name and Key Features section above.

**DATASHEET****CD38 Rabbit Monoclonal Antibody (ARM607)**

CAT. NO. ARM6898

**STORAGE**

Store at 4°C short term. For long term storage, store at -20°C, avoiding freeze/thaw cycles.

**DATA**

Immunohistochemical staining of human tonsil tissue using CD38 Rabbit Monoclonal Antibody (ARM607).

**RESEARCH USE ONLY**

For Research Use Only. Not for diagnostic, therapeutics, prophylactic or in vivo use.

More information: [www.arexbio.com / cd38-mouse-monoclonal-antibody-arm607-arm6898](http://www.arexbio.com/cd38-mouse-monoclonal-antibody-arm607-arm6898)