

DATASHEET

Claudin 18.2 Rabbit Monoclonal Antibody (ARM611)

CAT. NO. ARM6902

KEY FEATURES

Target	Claudin 18.2	Clone ID	ARM611
Source / Host	Rabbit	Reactivity	Human
Applications	IHC	Dilution	1:50-1:200
Clonality	Monoclonal	Storage	-20°C

BACKGROUND

The Claudin18.2 (CLDN18.2) protein, a splice variant of the membrane epithelial tight junction protein Claudin 18, is a promising pan-cancer target with limited expression in normal tissues. Studies demonstrate that the abnormal expression of CLDN18.2 is often observed during the occurrence and development of various primary tumors and metastases, including breast cancer, gastric cancer, colon cancer, liver cancer, head and neck cancer, bronchial cancer and non-small cell lung cancer.

APPLICATION

To ensure optimal assay performance, AREX recommends conducting reagent titration tailored to each testing system for optimal detection results.

Application	IHC
Dilution Ratio	1:50-1:200

*Results are sample-specific. Please refer to your local assay conditions and test parameters for reference.

PRODUCT OVERVIEW

Antibody Type	Primary antibodies
Isotype	IgG
Positive Control	Pancreatic Ductal Adenocarcinoma
Localization	Membrane
Form / Buffer	Tris Buffer, pH 7.3 - 7.7, with 1% BSA and <0.1% Sodium Azide
Purification	Purified
Conjugation	Unconjugated
Gene Symbol	CLDN18
Entrez Gene ID	51208
Uniprot	P56856
Alternative Names	Claudin-18 isoform 2

*AREX continuously optimizes our products. Webpage content may not reflect the latest updates. For inquiries, please contact info@arexbio.com or your local distributor.

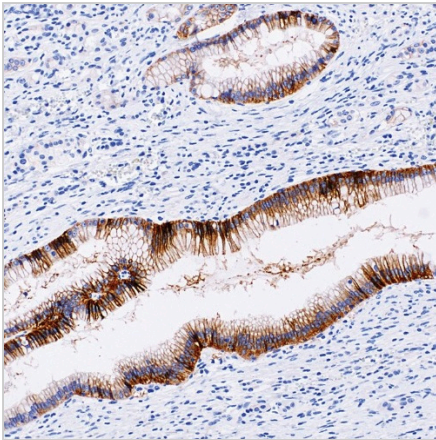
*Clone Number, Reactivity, Source/Host and Clonality can be found in the product name and Key Features section above.

DATASHEET**Claudin 18.2 Rabbit Monoclonal Antibody (ARM611)**

CAT. NO. ARM6902

STORAGE

Store at 4°C short term. For long term storage, store at -20°C, avoiding freeze/thaw cycles.

DATA

Immunohistochemical staining of human pancreatic ductal adenocarcinoma tissue using Claudin 18.2 Rabbit Monoclonal Antibody (ARM611).

RESEARCH USE ONLY

For Research Use Only. Not for diagnostic, therapeutics, prophylactic or in vivo use.

More information: [www.arexbio.com / claudin-18.2-mouse-monoclonal-antibody-arm611-arm6902](http://www.arexbio.com/claudin-18.2-mouse-monoclonal-antibody-arm611-arm6902)