

## DATASHEET

# cTnI Mouse Monoclonal Antibody (ARM612)

CAT. NO. ARM6903

### KEY FEATURES

Target	cTnI	Clone ID	ARM612
Source / Host	Mouse	Reactivity	Human
Applications	IHC	Dilution	1:50-1:200
Clonality	Monoclonal	Storage	-20°C

### BACKGROUND

cTnI is a cardiac and skeletal muscle protein family. It is part of the troponin protein complex, where it binds to actin in thin myofilaments to hold the actin-tropomyosin complex in place. It is present in cardiac muscle tissue and is a reliable marker of cardiac muscle tissue injury, such as acute myocardial infarctions.

### APPLICATION

To ensure optimal assay performance, AREX recommends conducting reagent titration tailored to each testing system for optimal detection results.

Application	IHC
Dilution Ratio	1:50-1:200

\*Results are sample-specific. Please refer to your local assay conditions and test parameters for reference.

### PRODUCT OVERVIEW

Antibody Type	Primary antibodies
Isotype	
Positive Control	Heart
Localization	Cytoplasmic
Form / Buffer	Tris Buffer, pH 7.3 - 7.7, with 1% BSA and <0.1% Sodium Azide
Purification	Purified
Conjugation	Unconjugated
Gene Symbol	TNNI3
Entrez Gene ID	7137
Uniprot	P19429
Alternative Names	TNNC1; Troponin I, cardiac muscle; Cardiac troponin I

\*AREX continuously optimizes our products. Webpage content may not reflect the latest updates. For inquiries, please contact [info@arexbio.com](mailto:info@arexbio.com) or your local distributor.

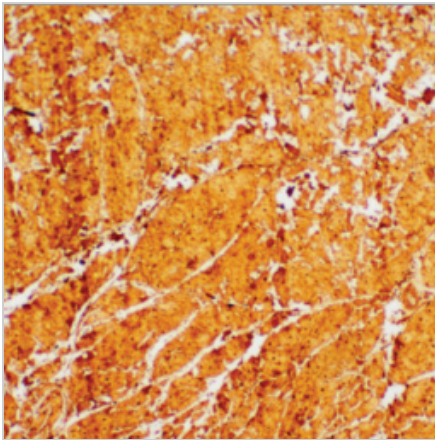
\*Clone Number, Reactivity, Source/Host and Clonality can be found in the product name and Key Features section above.

**DATASHEET****cTnI Mouse Monoclonal Antibody (ARM612)**

CAT. NO. ARM6903

**STORAGE**

Store at 4°C short term. For long term storage, store at -20°C, avoiding freeze/thaw cycles.

**DATA**

Immunohistochemical staining of human heart tissue using cTnI Mouse Monoclonal Antibody (ARM612).

**RESEARCH USE ONLY**

For Research Use Only. Not for diagnostic, therapeutics, prophylactic or in vivo use.

More information: [www.arexbio.com / ctni-mouse-monoclonal-antibody-arm612-arm6903](http://www.arexbio.com/ctni-mouse-monoclonal-antibody-arm612-arm6903)